

**Product Name: Claudin-7 Rabbit Polyclonal Antibody**  
**Catalog #: APRab08914**



---

## Summary

<b>Production Name</b>	Claudin-7 Rabbit Polyclonal Antibody
<b>Description</b>	Rabbit Polyclonal Antibody
<b>Host</b>	Rabbit
<b>Application</b>	WB,IHC,ELISA
<b>Reactivity</b>	Human,Mouse,Rat

## Performance

<b>Conjugation</b>	Unconjugated
<b>Modification</b>	Unmodified
<b>Isotype</b>	IgG
<b>Clonality</b>	Polyclonal
<b>Form</b>	Liquid
<b>Storage</b>	Store at 4°C short term. Aliquot and store at -20°C long term. Avoid freeze/thaw cycles.
<b>Buffer</b>	Liquid in PBS containing 50% glycerol, 0.5% BSA and 0.02% New type preservative N.
<b>Purification</b>	Affinity purification

## Immunogen

<b>Gene Name</b>	CLDN7
<b>Alternative Names</b>	CLDN7; CEPTRL2; CPETRL2; Claudin-7; CLDN-7
<b>Gene ID</b>	1366.0
<b>SwissProt ID</b>	O95471.The antiserum was produced against synthesized peptide derived from human Claudin 7. AA range:162-211

## Application

<b>Dilution Ratio</b>	WB 1:500 - 1:2000. IHC 1:100 - 1:300. ELISA: 1:10000..
<b>Molecular Weight</b>	32kD

## Background

---

**Product Name: Claudin-7 Rabbit Polyclonal Antibody**  
**Catalog #: APRab08914**

---

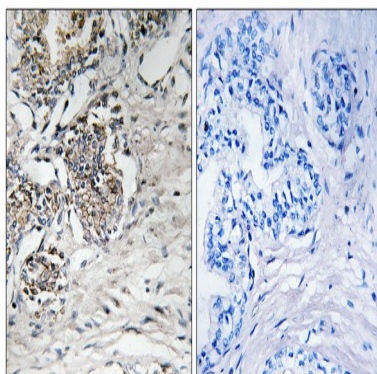


This gene encodes a member of the claudin family. Claudins are integral membrane proteins and components of tight junction strands. Tight junction strands serve as a physical barrier to prevent solutes and water from passing freely through the paracellular space between epithelial or endothelial cell sheets, and also play critical roles in maintaining cell polarity and signal transductions. Differential expression of this gene has been observed in different types of malignancies, including breast cancer, ovarian cancer, hepatocellular carcinomas, urinary tumors, prostate cancer, lung cancer, head and neck cancers, thyroid carcinomas, etc.. Alternatively spliced transcript variants encoding different isoforms have been found.[provided by RefSeq, May 2010],function:Plays a major role in tight junction-specific obliteration of the intercellular space.,induction:By androgens.,similarity:Belongs to the claudin family.,subunit:Directly interacts with TJP1/ZO-1, TJP2/ZO-2 and TJP3/ZO-3.,tissue specificity:Expressed in kidney, lung and prostate. Isoform 1 seems to be predominant, except in some normal prostate samples, where isoform 2 is the major form. Down-regulated in breast cancers, including ductal carcinoma in situ (DCIS), lobular carcinoma in situ (LCIS) and invasive ductal carcinoma (IDC) (at protein level), as well as in several cancer cell lines. Loss of expression correlates with histological grade, occurring predominantly in high-grade lesions.,

## Research Area

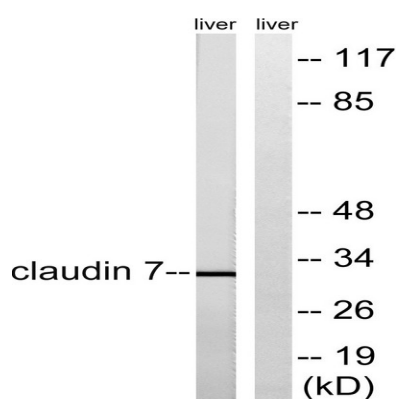
Cell adhesion molecules (CAMs);Tight junction;Leukocyte transendothelial migration;

## Image Data



Immunohistochemistry analysis of paraffin-embedded human prostate carcinoma tissue, using Claudin 7 Antibody. The picture on the right is blocked with the synthesized peptide.

**Product Name: Claudin-7 Rabbit Polyclonal Antibody**  
**Catalog #: APRab08914**



Western blot analysis of lysates from rat liver cells, using Claudin 7 Antibody. The lane on the right is blocked with the synthesized peptide.

#### **Note**

For research use only.