

Product Name: CLASR Rabbit Polyclonal Antibody
Catalog #: APRab08888



Summary

Production Name	CLASR Rabbit Polyclonal Antibody
Description	Rabbit Polyclonal Antibody
Host	Rabbit
Application	WB
Reactivity	Human,Rat,Mouse

Performance

Conjugation	Unconjugated
Modification	Unmodified
Isotype	IgG
Clonality	Polyclonal
Form	Liquid
Storage	Store at 4°C short term. Aliquot and store at -20°C long term. Avoid freeze/thaw cycles.
Buffer	Liquid in PBS containing 50% glycerol, and 0.02% New type preservative N.
Purification	Affinity purification

Immunogen

Gene Name	CLASRP SFRS16 SWAP2 UNQ2428/PRO4988
Alternative Names	
Gene ID	11129.0
SwissProt ID	Q8N2M8.Synthesized peptide derived from part region of human protein

Application

Dilution Ratio	WB 1:500-2000 ELISA 1:5000-20000
Molecular Weight	74kD

Background

caution:It is uncertain whether Met-1 or Met-16 is the initiator.,function:Probably functions as an alternative splicing regulator. May regulate the mRNA splicing of genes such as CLK1. May act by regulating members of the CLK kinase

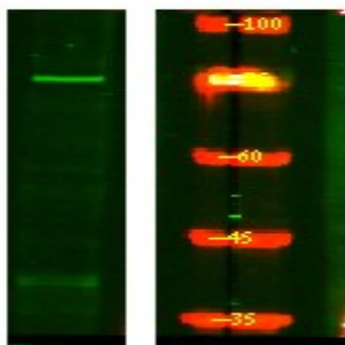
Product Name: CLASR Rabbit Polyclonal Antibody
Catalog #: APRab08888



family.,PTM:Phosphorylated in vitro by CLK4.,similarity:Belongs to the splicing factor SR family.,subunit:Probably interacts with CLK4.,caution:It is uncertain whether Met-1 or Met-16 is the initiator.,function:Probably functions as an alternative splicing regulator. May regulate the mRNA splicing of genes such as CLK1. May act by regulating members of the CLK kinase family.,PTM:Phosphorylated in vitro by CLK4.,similarity:Belongs to the splicing factor SR family.,subunit:Probably interacts with CLK4.,

Research Area

Image Data



Western Blot analysis of HEK293 lysis, using primary antibody at 1:1000 dilution. Secondary antibody was diluted at 1:10000

Note

For research use only.