

Product Name: Citron Rabbit Polyclonal Antibody
Catalog #: APRab08832



Summary

Production Name	Citron Rabbit Polyclonal Antibody
Description	Rabbit Polyclonal Antibody
Host	Rabbit
Application	IHC,ELISA
Reactivity	Human,Mouse

Performance

Conjugation	Unconjugated
Modification	Unmodified
Isotype	IgG
Clonality	Polyclonal
Form	Liquid
Storage	Store at 4°C short term. Aliquot and store at -20°C long term. Avoid freeze/thaw cycles.
Buffer	Liquid in PBS containing 50% glycerol, 0.5% BSA and 0.02% New type preservative N.
Purification	Affinity purification

Immunogen

Gene Name	CIT
Alternative Names	CIT; CRIK; KIAA0949; STK21; Citron Rho-interacting kinase; CRIK; Serine/threonine-protein kinase 21
Gene ID	11113.0
SwissProt ID	O14578.The antiserum was produced against synthesized peptide derived from human CTRO. AA range:1011-1060

Application

Dilution Ratio	IHC 1:100-1:300 ELISA: 1:40000
Molecular Weight	

Background

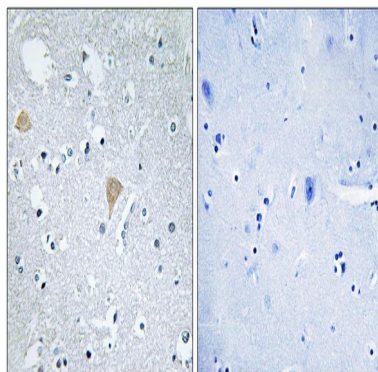
Product Name: Citron Rabbit Polyclonal Antibody
Catalog #: APRab08832



This gene encodes a serine/threonine-protein kinase that functions in cell division. Together with the kinesin KIF14, this protein localizes to the central spindle and midbody, and functions to promote efficient cytokinesis. This protein is involved in central nervous system development. Polymorphisms in this gene are associated with bipolar disorder and risk for schizophrenia. Alternative splicing results in multiple transcript variants. [provided by RefSeq, Aug 2011],catalytic activity:ATP + a protein = ADP + a phosphoprotein.,function:Required for KIF14 localization to the central spindle and midbody. May play a role in cytokinesis. Putative RHO/RAC effector that binds to the GTP-bound forms of RHO and RAC1. It probably binds p21 with a tighter specificity in vivo. Dual specificity protein kinase activity catalyzing autophosphorylation and phosphorylation of exogenous substrates on both serine/threonine and tyrosine residues. Plays an important role in the regulation of cytokinesis and the development of the central nervous system.,similarity:Belongs to the protein kinase superfamily.,similarity:Belongs to the protein kinase superfamily. AGC Ser/Thr protein kinase family.,similarity:Contains 1 AGC-kinase C-terminal domain.,similarity:Contains 1 CNH domain.,similarity:Contains 1 PH domain.,similarity:Contains 1 phorbol-ester/DAG-type zinc finger.,similarity:Contains 1 protein kinase domain.,subunit:Directly interacts with KIF14 depending on the activation state (stronger interaction with the kinase-dead form). Homodimer.,

Research Area

Image Data



Immunohistochemistry analysis of paraffin-embedded human brain tissue, using CTRO Antibody. The picture on the right is blocked with the synthesized peptide.

Note

For research use only.