

Product Name: CIS Rabbit Polyclonal Antibody
Catalog #: APRab08823



Summary

Production Name	CIS Rabbit Polyclonal Antibody
Description	Rabbit Polyclonal Antibody
Host	Rabbit
Application	IHC,ELISA
Reactivity	Human,Mouse,Rat

Performance

Conjugation	Unconjugated
Modification	Unmodified
Isotype	IgG
Clonality	Polyclonal
Form	Liquid
Storage	Store at 4°C short term. Aliquot and store at -20°C long term. Avoid freeze/thaw cycles.
Buffer	Liquid in PBS containing 50% glycerol, 0.5% BSA and 0.02% New type preservative N.
Purification	Affinity purification

Immunogen

Gene Name	CISH G18
Alternative Names	Cytokine-inducible SH2-containing protein (CIS;CIS-1;Protein G18;Suppressor of cytokine signaling;SOCS)
Gene ID	1154.0
SwissProt ID	Q9NSE2.Synthetic peptide from human protein at AA range: 30-90

Application

Dilution Ratio	IHC 1:50-200 ELISA 1:10000-20000
Molecular Weight	

Background

cytokine inducible SH2 containing protein(CISH) Homo sapiens The protein encoded by this gene contains a SH2 domain

Product Name: CIS Rabbit Polyclonal Antibody
Catalog #: APRab08823

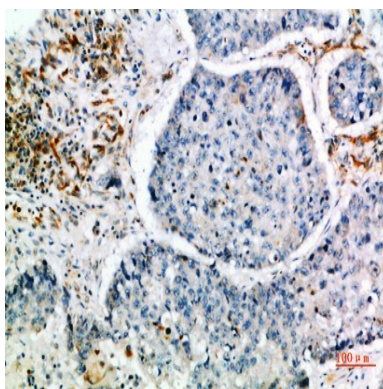


and a SOCS box domain. The protein thus belongs to the cytokine-induced STAT inhibitor (CIS), also known as suppressor of cytokine signaling (SOCS) or STAT-induced STAT inhibitor (SSI), protein family. CIS family members are known to be cytokine-inducible negative regulators of cytokine signaling. The expression of this gene can be induced by IL2, IL3, GM-CSF and EPO in hematopoietic cells. Proteasome-mediated degradation of this protein has been shown to be involved in the inactivation of the erythropoietin receptor. Multiple transcript variants encoding different isoforms have been found for this gene. [provided by RefSeq, Aug 2008],disease:CISH deletion may be involved in the pathogenesis of renal cell carcinomas and of lung cancer since lung and kidney tumors frequently exhibit 3p21.3 deletions.,function:SOCS family proteins form part of a classical negative feedback system that regulates cytokine signal transduction. CIS is involved in the negative regulation of cytokines that signal through the JAK-STAT5 pathway such as erythropoietin, prolactin and interleukin 3 (IL3) receptor. Inhibits STAT5 trans-activation by suppressing its tyrosine phosphorylation. May be a substrate-recognition component of a SCF-like ECS (Elongin BC-CUL2/5-SOCS-box protein) E3 ubiquitin-protein ligase complex which mediates the ubiquitination and subsequent proteasomal degradation of target proteins.,induction:By a subset of cytokines including erythropoietin (EPO).,pathway:Protein modification; protein ubiquitination.,PTM:Association with EPOR may target the protein for proteolysis by the ubiquitin-dependent proteasome pathway. CIS is mainly monubiquitinated (37 kDa form) but may also exist in a polyubiquitinated form (45 kDa).,similarity:Contains 1 SH2 domain.,similarity:Contains 1 SOCS box domain.,subunit:Stably associated with the tyrosine-phosphorylated IL3 receptor beta chain and tyrosine-phosphorylated EPO receptor (EPOR).,tissue specificity:Expressed in various epithelial tissues. Abundantly expressed in liver and kidney, and to a lesser extent in lung. The tissue distribution of isoforms 1 and 1B is distinct.,

Research Area

Jak_STAT;

Image Data



Immunohistochemical analysis of paraffin-embedded human-lung-cancer, antibody was diluted at 1:200

Note

For research use only.

Product Name: CIS Rabbit Polyclonal Antibody
Catalog #: APRab08823

