

**Product Name: Chordin Rabbit Polyclonal Antibody**  
**Catalog #: APRab08776**



## Summary

<b>Production Name</b>	Chordin Rabbit Polyclonal Antibody
<b>Description</b>	Rabbit Polyclonal Antibody
<b>Host</b>	Rabbit
<b>Application</b>	IHC,ELISA
<b>Reactivity</b>	Human,Mouse,Rat

## Performance

<b>Conjugation</b>	Unconjugated
<b>Modification</b>	Unmodified
<b>Isotype</b>	IgG
<b>Clonality</b>	Polyclonal
<b>Form</b>	Liquid
<b>Storage</b>	Store at 4°C short term. Aliquot and store at -20°C long term. Avoid freeze/thaw cycles.
<b>Buffer</b>	Liquid in PBS containing 50% glycerol, 0.5% BSA and 0.02% New type preservative N.
<b>Purification</b>	Affinity purification

## Immunogen

<b>Gene Name</b>	CHRD UNQ217/PRO243
<b>Alternative Names</b>	Chordin
<b>Gene ID</b>	8646.0
<b>SwissProt ID</b>	Q9H2X0.The antiserum was produced against synthesized peptide derived from the C-terminal region of human CHRD. AA range:905-954

## Application

<b>Dilution Ratio</b>	IHC 1:50-200 ELISA 1:10000-20000
<b>Molecular Weight</b>	

## Background

This gene encodes a secreted protein that dorsalizes early vertebrate embryonic tissues by binding to ventralizing TGF-

**Product Name: Chordin Rabbit Polyclonal Antibody**  
**Catalog #: AP Rab08776**

---

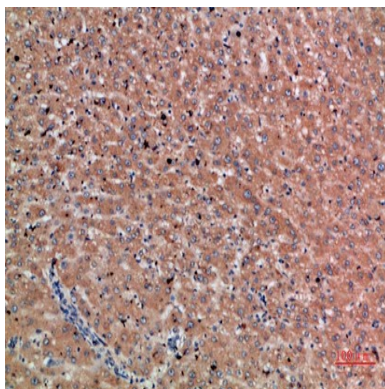


beta-like bone morphogenetic proteins and sequestering them in latent complexes. The encoded protein may also have roles in organogenesis and during adulthood. It has been suggested that this gene could be a candidate gene for Cornelia de Lange syndrome. Reduced expression of this gene results in enhanced bone regeneration. Alternative splicing results in multiple transcript variants. Other alternative splice variants have been described but their full length sequence has not been determined. [provided by RefSeq, Jan 2015], alternative products: Experimental confirmation may be lacking for some isoforms, function: Dorsalizing factor. Key developmental protein that dorsalizes early vertebrate embryonic tissues by binding to ventralizing TGF-beta family bone morphogenetic proteins (BMPs) and sequestering them in latent complexes., PTM: Cleaved by tolloid proteases; cleavage participates to dorsoventral patterning during early development., similarity: Belongs to the chordin family., similarity: Contains 4 CHRD domains., similarity: Contains 4 VWFC domains., subunit: Interacts with TWSG1 and/or BMP4., tissue specificity: Expressed at the highest level in liver.,

## Research Area

TGF-beta;

## Image Data



Immunohistochemical analysis of paraffin-embedded human liver cancer, antibody was diluted at 1:200

## Note

For research use only.