

Summary

Production Name	c-Fgr Rabbit Polyclonal Antibody
Description	Rabbit Polyclonal Antibody
Host	Rabbit
Application	WB,ELISA
Reactivity	Human,Mouse,Rat

Performance

Conjugation	Unconjugated
Modification	Unmodified
Isotype	IgG
Clonality	Polyclonal
Form	Liquid
Storage	Store at 4°C short term. Aliquot and store at -20°C long term. Avoid freeze/thaw cycles.
Buffer	Liquid in PBS containing 50% glycerol, 0.5% BSA and 0.02% New type preservative N.
Purification	Affinity purification

Immunogen

Gene Name	FGR
Alternative Names	FGR; SRC2; Tyrosine-protein kinase Fgr; Gardner-Rasheed feline sarcoma viral; v-fgr) oncogene homolog; Proto-oncogene c-Fgr; p55-Fgr; p58-Fgr; p58c-Fgr
Gene ID	2268.0
SwissProt ID	P09769.The antiserum was produced against synthesized peptide derived from human N-terminal FGR. AA range:61-110

Application

Dilution Ratio	WB 1:500 - 1:2000. ELISA: 1:5000
Molecular Weight	55kD

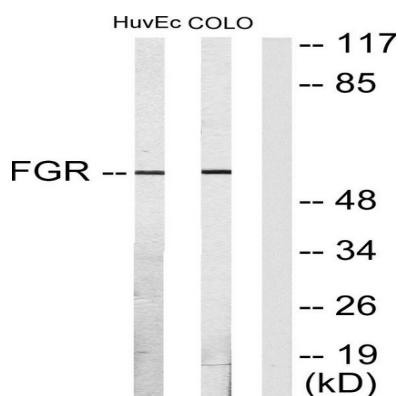
Background

This gene is a member of the Src family of protein tyrosine kinases (PTKs). The encoded protein contains N-terminal sites for myristylation and palmitoylation, a PTK domain, and SH2 and SH3 domains which are involved in mediating protein-protein interactions with phosphotyrosine-containing and proline-rich motifs, respectively. The protein localizes to plasma membrane ruffles, and functions as a negative regulator of cell migration and adhesion triggered by the beta-2 integrin signal transduction pathway. Infection with Epstein-Barr virus results in the overexpression of this gene. Multiple alternatively spliced variants, encoding the same protein, have been identified. [provided by RefSeq, Jul 2008], catalytic activity: $\text{ATP} + \text{a [protein]-L-tyrosine} = \text{ADP} + \text{a [protein]-L-tyrosine phosphate}$, similarity: Belongs to the protein kinase superfamily. Tyr protein kinase family. SRC subfamily, similarity: Contains 1 protein kinase domain, similarity: Contains 1 SH2 domain, similarity: Contains 1 SH3 domain, subunit: Binds PTPNS1,

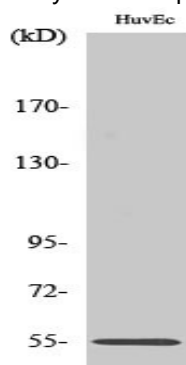
Research Area

Chemokine;

Image Data



Western blot analysis of lysates from HUVEC and COLO205 cells, using FGR Antibody. The lane on the right is blocked with the synthesized peptide.



Western Blot analysis of various cells using c-Fgr Polyclonal Antibody

Product Name: c-Fgr Rabbit Polyclonal Antibody
Catalog #: APRab08701



Note

For research use only.