

## Summary

<b>Production Name</b>	Cerebral 1 Rabbit Polyclonal Antibody
<b>Description</b>	Rabbit Polyclonal Antibody
<b>Host</b>	Rabbit
<b>Application</b>	WB,IHC,ELISA
<b>Reactivity</b>	Human,Rat,Mouse

## Performance

<b>Conjugation</b>	Unconjugated
<b>Modification</b>	Unmodified
<b>Isotype</b>	IgG
<b>Clonality</b>	Polyclonal
<b>Form</b>	Liquid
<b>Storage</b>	Store at 4°C short term. Aliquot and store at -20°C long term. Avoid freeze/thaw cycles.
<b>Buffer</b>	Liquid in PBS containing 50% glycerol, 0.5% BSA and 0.02% New type preservative N.
<b>Purification</b>	Affinity purification

## Immunogen

<b>Gene Name</b>	RRP8
<b>Alternative Names</b>	RRP8; KIAA0409; NML; hucep-1; Ribosomal RNA-processing protein 8; Cerebral protein 1; Nucleomethylin
<b>Gene ID</b>	23378.0
<b>SwissProt ID</b>	O43159.The antiserum was produced against synthesized peptide derived from human HUCE1. AA range:271-320

## Application

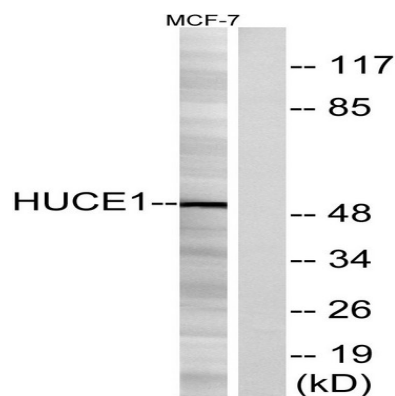
<b>Dilution Ratio</b>	WB 1:500 - 1:2000. IHC 1:100 - 1:300. ELISA: 1:20000..
<b>Molecular Weight</b>	51kD

## Background

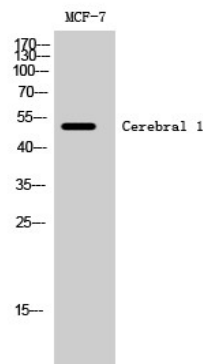
RRP8 (Ribosomal RNA Processing 8, Methyltransferase, Homolog (Yeast) is a Protein Coding gene. Diseases associated with RRP8 include bowen-conradi syndrome and lymphatic system cancer. Among its related pathways are Gene Expression and Activated PKN1 stimulates transcription of AR (androgen receptor) regulated genes KLK2 and KLK3. GO annotations related to this gene include poly(A) RNA binding and methylated histone binding. ssential component of the eNoSC (energy-dependent nucleolar silencing) complex, a complex that mediates silencing of rDNA in response to intracellular energy status and acts by recruiting histone-modifying enzymes. The eNoSC complex is able to sense the energy status of cell: upon glucose starvation, elevation of NAD(+)/NADP(+) ratio activates SIRT1, leading to histone H3 deacetylation followed by dimethylation of H3 at Lys-9 (H3K9me2) by SUV39H1 and the formation of silent chromatin in the rDNA locus. In the complex, RRP8 binds to H3K9me2 and probably acts as a methyltransferase. Its substrates are however unknown. rRNA processing, RNA processing, rRNA metabolic process, ribonucleoprotein complex biogenesis, ncRNA processing,ncRNA metabolic process, ribosome biogenesis,

## Research Area

## Image Data



Western blot analysis of lysates from MCF-7 cells, using HUCE1 Antibody. The lane on the right is blocked with the synthesized peptide.

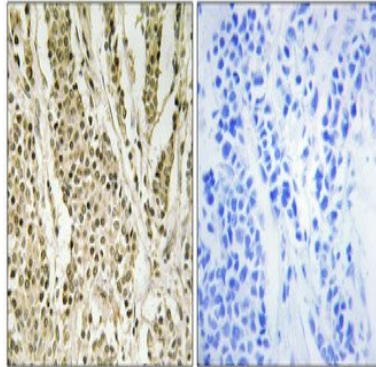


**Product Name: Cerebral 1 Rabbit Polyclonal Antibody**  
**Catalog #: APRab08683**



---

Western Blot analysis of MCF-7 cells using Cerebral 1 Polyclonal Antibody cells nucleus extracted by Minute TM Cytoplasmic and Nuclear Fractionation kit (SC-003, Inventbiotech, MN, USA) .



Immunohistochemical analysis of paraffin-embedded Human breast cancer. Antibody was diluted at 1:100 (4°, overnight) . High-pressure and temperature Tris-EDTA, pH 8.0 was used for antigen retrieval. Negative control (right) obtained from antibody was pre-absorbed by immunogen peptide.

## **Note**

For research use only.