

**Product Name: Cerebellin 2 Rabbit Polyclonal Antibody**  
**Catalog #: APRab08680**



---

## Summary

<b>Production Name</b>	Cerebellin 2 Rabbit Polyclonal Antibody
<b>Description</b>	Rabbit Polyclonal Antibody
<b>Host</b>	Rabbit
<b>Application</b>	WB,ELISA
<b>Reactivity</b>	Human,Mouse,Rat,Monkey

## Performance

<b>Conjugation</b>	Unconjugated
<b>Modification</b>	Unmodified
<b>Isotype</b>	IgG
<b>Clonality</b>	Polyclonal
<b>Form</b>	Liquid
<b>Storage</b>	Store at 4°C short term. Aliquot and store at -20°C long term. Avoid freeze/thaw cycles.
<b>Buffer</b>	Liquid in PBS containing 50% glycerol, 0.5% BSA and 0.02% New type preservative N.
<b>Purification</b>	Affinity purification

## Immunogen

<b>Gene Name</b>	CBLN2
<b>Alternative Names</b>	CBLN2; Cerebellin-2
<b>Gene ID</b>	147381.0
<b>SwissProt ID</b>	Q8IUK8.The antiserum was produced against synthesized peptide derived from human CBLN2. AA range:161-210

## Application

<b>Dilution Ratio</b>	WB 1:500 - 1:2000. ELISA: 1:40000.
<b>Molecular Weight</b>	24kD

## Background

---

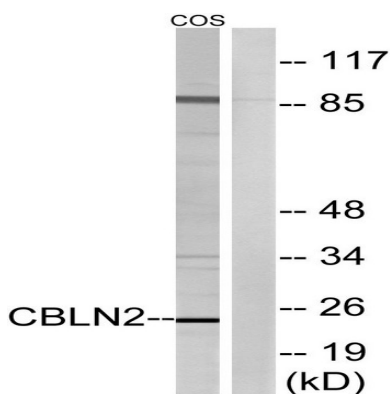
**Product Name: Cerebellin 2 Rabbit Polyclonal Antibody**  
**Catalog #: APRab08680**



similarity:Contains 1 C1q domain.,subunit:May interact with CBLN1, CBLN3 and CBLN4.,similarity:Contains 1 C1q domain.,subunit:May interact with CBLN1, CBLN3 and CBLN4.,

## Research Area

## Image Data



Western blot analysis of lysates from COS cells, using CBLN2 Antibody. The lane on the right is blocked with the synthesized peptide.



Western Blot analysis of various cells using Cerebellin 2 Polyclonal Antibody

## Note

For research use only.