

Product Name: CEP55 Rabbit Polyclonal Antibody
Catalog #: APRab08667



Summary

Production Name	CEP55 Rabbit Polyclonal Antibody
Description	Rabbit Polyclonal Antibody
Host	Rabbit
Application	WB,ELISA
Reactivity	Human,Rat,Mouse

Performance

Conjugation	Unconjugated
Modification	Unmodified
Isotype	IgG
Clonality	Polyclonal
Form	Liquid
Storage	Store at 4°C short term. Aliquot and store at -20°C long term. Avoid freeze/thaw cycles.
Buffer	Liquid in PBS containing 50% glycerol, 0.5% BSA and 0.02% New type preservative N.
Purification	Affinity purification

Immunogen

Gene Name	CEP55
Alternative Names	CEP55; C10orf3; URCC6; Centrosomal protein of 55 kDa; Cep55; Up-regulated in colon cancer 6
Gene ID	55165.0
SwissProt ID	Q53EZ4.The antiserum was produced against synthesized peptide derived from human CEP55. AA range:81-130

Application

Dilution Ratio	WB 1:500 - 1:2000. ELISA: 1:40000..
Molecular Weight	54kD

Background

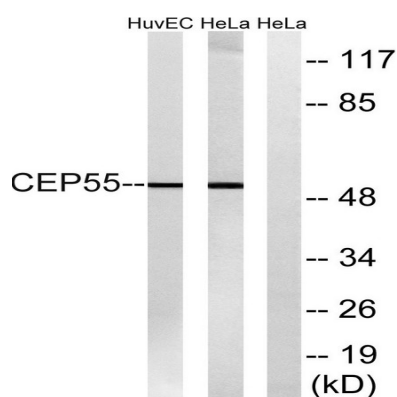
function: Plays a role in mitotic exit and cytokinesis. Not required for microtubule nucleation. Recruits PD6IP and TSG101 to midbody during cytokinesis.,PTM: There is a hierarchy of phosphorylation, where both Ser-425 and Ser-428 are phosphorylated at the onset of mitosis, prior to Ser-436. Phosphorylation at Ser-425 and Ser-428 is required for dissociation from the centrosome at the G2/M boundary. Phosphorylation at the 3 sites, Ser-425, Ser-428 and Ser-436, is required for protein function at the final stages of cell division to complete cytokinesis successfully.,subcellular location: Present at the centrosomes at interphase. A small portion is associated preferentially with the mother centriole, whereas the majority localizes to the pericentriolar material. During mitosis, loss of affinity for the centrosome at the onset of prophase and diffusion throughout the cell. This dissociation from the centrosome is phosphorylation-dependent. May remain localized at the centrosome during mitosis in certain cell types. Appears at the cleavage furrow in late anaphase and in the midbody in cytokinesis.,subunit: Homodimer. Interacts (phosphorylated on Ser-425 and Ser-428) with PLK1. Interacts with AKAP9; the interaction occurs in interphase and is lost upon mitotic entry. Interacts with PCNT; the interaction occurs in interphase and is lost upon mitotic entry. Interacts with PD6IP; the interaction is direct; CEP55 binds PD6IP in a 2:1 stoichiometry; PD6IP competes with TSG101 for the same binding site. Interacts with TSG101; TSG101 competes with PD6IP for the same binding site; interaction is required for cytokinesis but not for viral budding. Interacts with FAM125A, VPS37B, VPS37C and VPS28.,tissue specificity: Widely expressed, mostly in proliferative tissues. Highly expressed in testis. Intermediate levels in adult and fetal thymus, as well as in various cancer cell lines. Low levels in different parts of the digestive tract, bone marrow, lymph nodes, placenta, fetal heart and fetal spleen. Hardly detected in brain.,function: Plays a role in mitotic exit and cytokinesis. Not required for microtubule nucleation. Recruits PD6IP and TSG101 to midbody during cytokinesis.,PTM: There is a hierarchy of phosphorylation, where both Ser-425 and Ser-428 are phosphorylated at the onset of mitosis, prior to Ser-436. Phosphorylation at Ser-425 and Ser-428 is required for dissociation from the centrosome at the G2/M boundary. Phosphorylation at the 3 sites, Ser-425, Ser-428 and Ser-436, is required for protein function at the final stages of cell division to complete cytokinesis successfully.,subcellular location: Present at the centrosomes at interphase. A small portion is associated preferentially with the mother centriole, whereas the majority localizes to the pericentriolar material. During mitosis, loss of affinity for the centrosome at the onset of prophase and diffusion throughout the cell. This dissociation from the centrosome is phosphorylation-dependent. May remain localized at the centrosome during mitosis in certain cell types. Appears at the cleavage furrow in late anaphase and in the midbody in cytokinesis.,subunit: Homodimer. Interacts (phosphorylated on Ser-425 and Ser-428) with PLK1. Interacts with AKAP9; the interaction occurs in interphase and is lost upon mitotic entry. Interacts with PCNT; the interaction occurs in interphase and is lost upon mitotic entry. Interacts with PD6IP; the interaction is direct; CEP55 binds PD6IP in a 2:1 stoichiometry; PD6IP competes with TSG101 for the same binding site. Interacts with TSG101; TSG101 competes with PD6IP for the same binding site; interaction is required for cytokinesis but not for viral budding. Interacts with FAM125A, VPS37B, VPS37C and VPS28.,tissue specificity: Widely expressed, mostly in proliferative tissues. Highly expressed in testis. Intermediate levels in adult and fetal thymus, as well as in various cancer cell lines. Low levels in different parts of the digestive tract, bone marrow, lymph nodes, placenta, fetal heart and fetal spleen. Hardly detected in brain.,

Product Name: CEP55 Rabbit Polyclonal Antibody
Catalog #: APRab08667

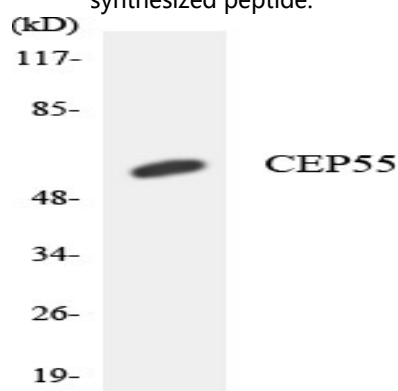


Research Area

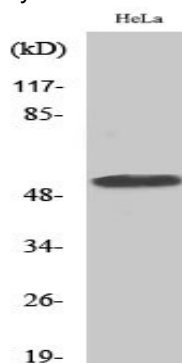
Image Data



Western blot analysis of lysates from HeLa and HUVEC cells, using CEP55 Antibody. The lane on the right is blocked with the synthesized peptide.



Western blot analysis of the lysates from COLO205 cells using CEP55 antibody.



Western Blot analysis of various cells using CEP55 Polyclonal Antibody

Note

Product Name: CEP55 Rabbit Polyclonal Antibody
Catalog #: APRab08667



For research use only.