

**Product Name: CEP170 Rabbit Polyclonal Antibody**  
**Catalog #: APRab08661**



## Summary

<b>Production Name</b>	CEP170 Rabbit Polyclonal Antibody
<b>Description</b>	Rabbit Polyclonal Antibody
<b>Host</b>	Rabbit
<b>Application</b>	IHC, WB,
<b>Reactivity</b>	Human, Rat, Mouse

## Performance

<b>Conjugation</b>	Unconjugated
<b>Modification</b>	Unmodified
<b>Isotype</b>	IgG
<b>Clonality</b>	Polyclonal
<b>Form</b>	Liquid
<b>Storage</b>	Store at 4°C short term. Aliquot and store at -20°C long term. Avoid freeze/thaw cycles.
<b>Buffer</b>	Liquid in PBS containing 50% glycerol, 0.5% BSA and 0.02% New type preservative N.
<b>Purification</b>	Affinity purification

## Immunogen

<b>Gene Name</b>	CEP170
<b>Alternative Names</b>	CEP170; FAM68A; KAB; KIAA0470; Centrosomal protein of 170 kDa; Cep170; KARP-1-binding protein; KARP1-binding protein
<b>Gene ID</b>	9859.0
<b>SwissProt ID</b>	Q5SW79. The antiserum was produced against synthesized peptide derived from human CEP170. AA range: 701-750

## Application

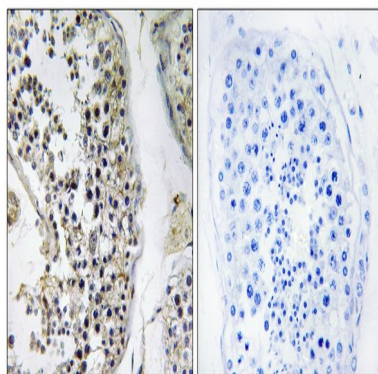
<b>Dilution Ratio</b>	WB 1:500 - 1:2000. IHC 1:100 - 1:300. ELISA: 1:40000..
<b>Molecular Weight</b>	160kD

## Background

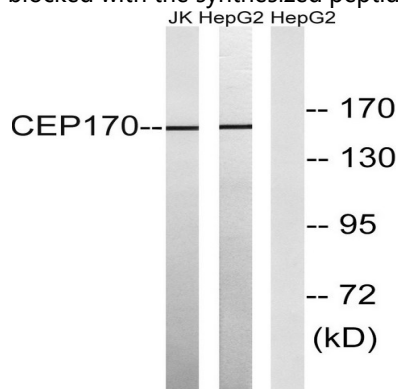
centrosomal protein 170(CEP170) Homo sapiens The product of this gene is a component of the centrosome, a non-membraneous organelle that functions as the major microtubule-organizing center in animal cells. During interphase, the encoded protein localizes to the sub-distal appendages of mature centrioles, which are microtubule-based structures thought to help organize centrosomes. During mitosis, the protein associates with spindle microtubules near the centrosomes. The protein interacts with and is phosphorylated by polo-like kinase 1, and functions in maintaining microtubule organization and cell morphology. The human genome contains a putative transcribed pseudogene. Several alternatively spliced transcript variants of this gene have been found, but the full-length nature of some of these variants has not been determined. [provided by RefSeq, Jul 2008],function:Plays a role in microtubule organization.,PTM:Phosphorylated; probably by PLK1. Phosphorylated upon DNA damage, probably by ATM or ATR.,similarity:Belongs to the CEP170 family.,similarity:Contains 1 FHA domain.,subcellular location:Associated with the mature mother centriole. Associated with spindle microtubules during mitosis.,subunit:Interacts with PLK1.,

## Research Area

## Image Data



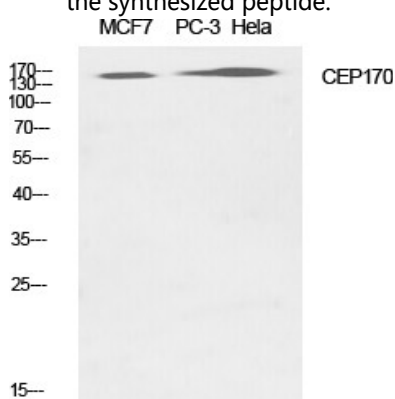
Immunohistochemistry analysis of paraffin-embedded human testis tissue, using CEP170 Antibody. The picture on the right is blocked with the synthesized peptide.



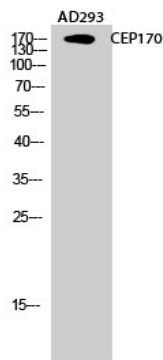
**Product Name: CEP170 Rabbit Polyclonal Antibody**  
**Catalog #: APRab08661**



Western blot analysis of lysates from HepG2 and Jurkat cells, using CEP170 Antibody. The lane on the right is blocked with the synthesized peptide.



Western Blot analysis of various cells using CEP170 Polyclonal Antibody diluted at 1: 1000



Western Blot analysis of AD293 cells using CEP170 Polyclonal Antibody diluted at 1: 1000

**Note**

For research use only.