

**Product Name: CDNF Rabbit Polyclonal Antibody**  
**Catalog #: APRab08581**



## Summary

<b>Production Name</b>	CDNF Rabbit Polyclonal Antibody
<b>Description</b>	Rabbit Polyclonal Antibody
<b>Host</b>	Rabbit
<b>Application</b>	IHC,ELISA
<b>Reactivity</b>	Human,Rat,Mouse

## Performance

<b>Conjugation</b>	Unconjugated
<b>Modification</b>	Unmodified
<b>Isotype</b>	IgG
<b>Clonality</b>	Polyclonal
<b>Form</b>	Liquid
<b>Storage</b>	Store at 4°C short term. Aliquot and store at -20°C long term. Avoid freeze/thaw cycles.
<b>Buffer</b>	Liquid in PBS containing 50% glycerol, 0.5% BSA and 0.02% New type preservative N.
<b>Purification</b>	Affinity purification

## Immunogen

<b>Gene Name</b>	CDNF ARMETL1
<b>Alternative Names</b>	Cerebral dopamine neurotrophic factor (ARMET-like protein 1;Conserved dopamine neurotrophic factor)
<b>Gene ID</b>	441549.0
<b>SwissProt ID</b>	Q49AH0.Synthetic peptide from human protein at AA range: 31-80

## Application

<b>Dilution Ratio</b>	IHC 1:50-200 ELISA 1:10000-20000
<b>Molecular Weight</b>	

## Background

CDNF (Cerebral Dopamine Neurotrophic Factor) is a Protein Coding gene. Trophic factor for dopamine neurons. Prevents

**Product Name: CDNF Rabbit Polyclonal Antibody**  
**Catalog #: APRab08581**

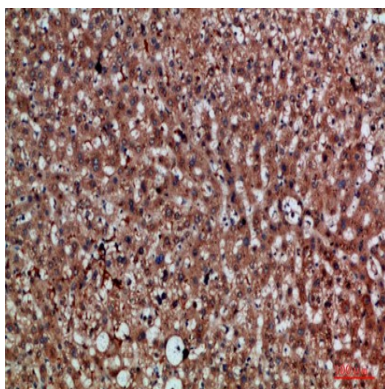
---



the 6-hydroxydopamine (6-OHDA)-induced degeneration of dopaminergic neurons. When administered after 6-OHDA-lesioning, restores the dopaminergic function and prevents the degeneration of dopaminergic neurons in substantia nigra (By similarity).

## Research Area

## Image Data



Immunohistochemical analysis of paraffin-embedded human-liver, antibody was diluted at 1:200

## Note

For research use only.