

Product Name: Cdk11A/B Rabbit Polyclonal Antibody
Catalog #: APRab08549



Summary

Production Name	Cdk11A/B Rabbit Polyclonal Antibody
Description	Rabbit Polyclonal Antibody
Host	Rabbit
Application	WB
Reactivity	Human,Rat,Mouse

Performance

Conjugation	Unconjugated
Modification	Unmodified
Isotype	IgG
Clonality	Polyclonal
Form	Liquid
Storage	Store at 4°C short term. Aliquot and store at -20°C long term. Avoid freeze/thaw cycles.
Buffer	Liquid in PBS containing 50% glycerol, 0.5% BSA and 0.02% New type preservative N.
Purification	Affinity purification

Immunogen

Gene Name	CDK11A/CDK11B CDK11A; CDC2L2; CDC2L3; PITSLREB; Cyclin-dependent kinase 11A; Cell division cycle 2-like protein kinase 2; Cell division protein kinase 11A; Galactosyltransferase-associated protein kinase p58/GTA; PITSLRE serine/threonine-protein kinase C
Alternative Names	
Gene ID	728642/984
SwissProt ID	Q9UQ88/P21127.Synthesized peptide derived from Cdk11A/B . at AA range: 190-270

Application

Dilution Ratio	WB 1:500-1:2000. ELISA: 1:10000.
Molecular Weight	90kD

Background

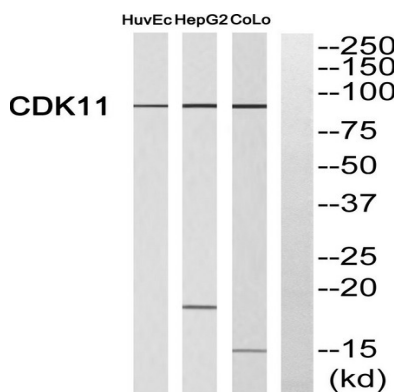
Product Name: Cdk11A/B Rabbit Polyclonal Antibody
Catalog #: APRab08549



This gene encodes a member of the serine/threonine protein kinase family. Members of this kinase family are known to be essential for eukaryotic cell cycle control. Due to a segmental duplication, this gene shares very high sequence identity with a neighboring gene. These two genes are frequently deleted or altered in neuroblastoma. The protein kinase encoded by this gene can be cleaved by caspases and may play a role in cell apoptosis. Alternative splicing results in multiple transcript variants. [provided by RefSeq, Sep 2015],caution:The sequence shown here is derived from an Ensembl automatic analysis pipeline and should be considered as preliminary data.,

Research Area

Image Data



Western blot analysis of CDK11 Antibody. The lane on the right is blocked with the CDK11 peptide.

Note

For research use only.