

## Summary

<b>Production Name</b>	Cdc34 Rabbit Polyclonal Antibody
<b>Description</b>	Rabbit Polyclonal Antibody
<b>Host</b>	Rabbit
<b>Application</b>	WB,IHC,ELISA
<b>Reactivity</b>	Human,Mouse,Rat

## Performance

<b>Conjugation</b>	Unconjugated
<b>Modification</b>	Unmodified
<b>Isotype</b>	IgG
<b>Clonality</b>	Polyclonal
<b>Form</b>	Liquid
<b>Storage</b>	Store at 4°C short term. Aliquot and store at -20°C long term. Avoid freeze/thaw cycles.
<b>Buffer</b>	Liquid in PBS containing 50% glycerol, 0.5% BSA and 0.02% New type preservative N.
<b>Purification</b>	Affinity purification

## Immunogen

<b>Gene Name</b>	CDC34
<b>Alternative Names</b>	CDC34; UBCH3; UBE2R1; Ubiquitin-conjugating enzyme E2 R1; Ubiquitin-conjugating enzyme E2-32 kDa complementing; Ubiquitin-conjugating enzyme E2-CDC34; Ubiquitin-protein ligase R1
<b>Gene ID</b>	997.0
<b>SwissProt ID</b>	P49427.The antiserum was produced against synthesized peptide derived from the Internal region of human CDC34. AA range:121-170

## Application

<b>Dilution Ratio</b>	WB 1:500 - 1:2000. IHC: 1:100-300 ELISA: 1:20000..
<b>Molecular Weight</b>	34kD

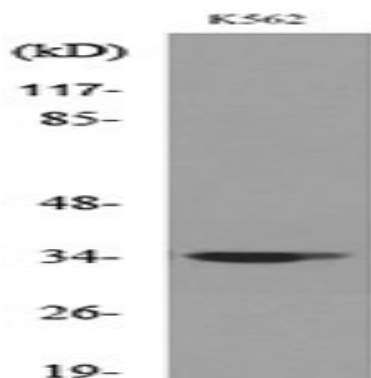
## Background

The protein encoded by this gene is a member of the ubiquitin-conjugating enzyme family. Ubiquitin-conjugating enzyme catalyzes the covalent attachment of ubiquitin to other proteins. This protein is a part of the large multiprotein complex, which is required for ubiquitin-mediated degradation of cell cycle G1 regulators, and for the initiation of DNA replication. [provided by RefSeq, Jul 2008],catalytic activity:ATP + ubiquitin + protein lysine = AMP + diphosphate + protein N-ubiquityllysine.,function:Catalyzes the covalent attachment of ubiquitin to other proteins. May be involved in degradation of katenin.,pathway:Protein modification; protein ubiquitination.,similarity:Belongs to the ubiquitin-conjugating enzyme family.,subunit:Interacts with SCF (SKP1-CUL1-F-box protein) E3 ubiquitin ligase complex. When phosphorylated, interacts with beta-TrCP (BTRC),.

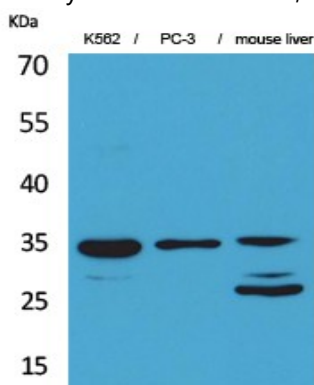
## Research Area

Ubiquitin mediated proteolysis;

## Image Data

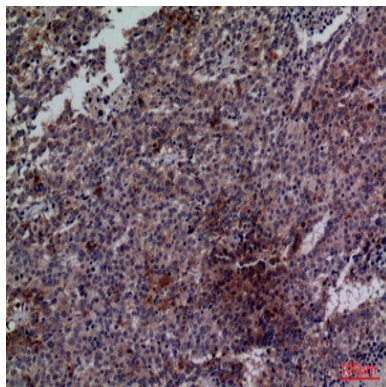


Western blot analysis of lysate from K562 cells, using CDC34 Antibody.

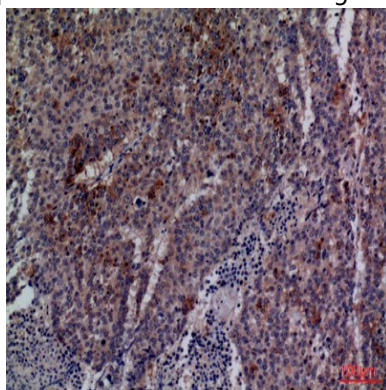


Western Blot analysis of K562, PC-3, mouse liver cells using Cdc34 Polyclonal Antibody.. Secondary antibody was diluted at 1:20000 cells nucleus extracted by Minute TM Cytoplasmic and Nuclear Fractionation kit (SC-003, Invent biotech, MN, USA) .

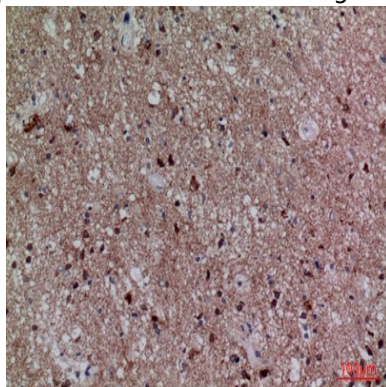
**Product Name: Cdc34 Rabbit Polyclonal Antibody**  
**Catalog #: APRab08512**



Immunohistochemical analysis of paraffin-embedded human-lung-cancer, antibody was diluted at 1:100



Immunohistochemical analysis of paraffin-embedded human-lung-cancer, antibody was diluted at 1:100



Immunohistochemical analysis of paraffin-embedded human-lung-cancer, antibody was diluted at 1:100

## **Note**

For research use only.