

Product Name: Cdc27 Rabbit Polyclonal Antibody
Catalog #: APRab08510



Summary

Production Name	Cdc27 Rabbit Polyclonal Antibody
Description	Rabbit Polyclonal Antibody
Host	Rabbit
Application	WB,ELISA
Reactivity	Human,Mouse,Rat

Performance

Conjugation	Unconjugated
Modification	Unmodified
Isotype	IgG
Clonality	Polyclonal
Form	Liquid
Storage	Store at 4°C short term. Aliquot and store at -20°C long term. Avoid freeze/thaw cycles.
Buffer	Liquid in PBS containing 50% glycerol, 0.5% BSA and 0.02% New type preservative N.
Purification	Affinity purification

Immunogen

Gene Name	CDC27
Alternative Names	CDC27; ANAPC3; D0S1430E; D17S978E; Cell division cycle protein 27 homolog; Anaphase-promoting complex subunit 3; APC3; CDC27 homolog; CDC27Hs; H-NUC
Gene ID	996.0
SwissProt ID	P30260.The antiserum was produced against synthesized peptide derived from human H-NUC. AA range:361-410

Application

Dilution Ratio	WB 1:500 - 1:2000. ELISA: 1:5000
Molecular Weight	92kD

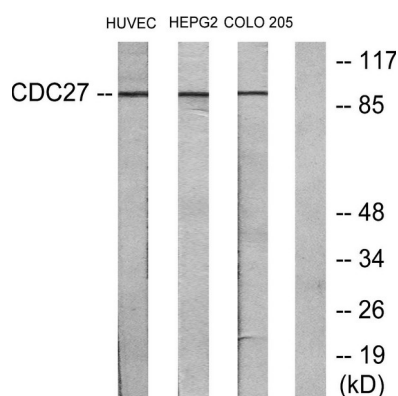
Background

The protein encoded by this gene shares strong similarity with *Saccharomyces cerevisiae* protein Cdc27, and the gene product of *Schizosaccharomyces pombe* nuc 2. This protein is a component of the anaphase-promoting complex (APC), which is composed of eight protein subunits and is highly conserved in eukaryotic cells. This complex catalyzes the formation of cyclin B-ubiquitin conjugate, which is responsible for the ubiquitin-mediated proteolysis of B-type cyclins. The protein encoded by this gene and three other members of the APC complex contain tetratricopeptide (TPR) repeats, which are important for protein-protein interactions. This protein was shown to interact with mitotic checkpoint proteins including Mad2, p53CDC and BUBR1, and it may thus be involved in controlling the timing of mitosis. Alternative splicing of this gene results in multiple transcript variants. Related pseudogenes have been identified. Phosphorylation on Ser-426 and Thr-446 occurs specifically during mitosis. Similarity: Belongs to the APC3/CDC27 family. Similarity: Contains 9 TPR repeats. Subunit: Interacts with RB.

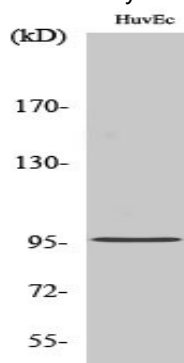
Research Area

Cell Cycle G1S; Cell Cycle G2M DNA; Oocyte meiosis; Ubiquitin mediated proteolysis; Progesterone-mediated oocyte maturation;

Image Data



Western blot analysis of lysates from HUVEC, HepG2, and COLO205 cells, using H-NUC Antibody. The lane on the right is blocked with the synthesized peptide.



Western Blot analysis of various cells using Cdc27 Polyclonal Antibody

Product Name: Cdc27 Rabbit Polyclonal Antibody
Catalog #: APRab08510



Note

For research use only.