

## Summary

<b>Production Name</b>	CD9 Rabbit Polyclonal Antibody
<b>Description</b>	Rabbit Polyclonal Antibody
<b>Host</b>	Rabbit
<b>Application</b>	IF,IHC,WB,ELISA
<b>Reactivity</b>	Human,Mouse,Rat

## Performance

<b>Conjugation</b>	Unconjugated
<b>Modification</b>	Unmodified
<b>Isotype</b>	IgG
<b>Clonality</b>	Polyclonal
<b>Form</b>	Liquid
<b>Storage</b>	Store at 4°C short term. Aliquot and store at -20°C long term. Avoid freeze/thaw cycles.
<b>Buffer</b>	Liquid in PBS containing 50% glycerol, 0.5% BSA and 0.02% New type preservative N.
<b>Purification</b>	Affinity purification

## Immunogen

<b>Gene Name</b>	CD9
<b>Alternative Names</b>	CD9; MIC3; TSPAN29; GIG2; CD9 antigen; 5H9 antigen; Cell growth-inhibiting gene 2 protein; Leukocyte antigen MIC3; Motility-related protein; MRP-1; Tetraspanin-29; Tspan-29; p24; CD antigen CD9
<b>Gene ID</b>	928.0
<b>SwissProt ID</b>	P21926.The antiserum was produced against synthesized peptide derived from human CD9. AA range:101-150

## Application

<b>Dilution Ratio</b>	WB 1:500 - 1:2000. IHC: 1:100-300 ELISA: 1:20000. IF 1:100-300 Not yet tested in other applications.
-----------------------	------------------------------------------------------------------------------------------------------

**Product Name: CD9 Rabbit Polyclonal Antibody**  
**Catalog #: APRab08483**



---

**Molecular Weight**      25kD

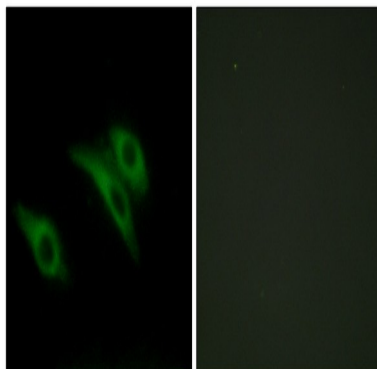
## Background

This gene encodes a member of the transmembrane 4 superfamily, also known as the tetraspanin family. Tetraspanins are cell surface glycoproteins with four transmembrane domains that form multimeric complexes with other cell surface proteins. The encoded protein functions in many cellular processes including differentiation, adhesion, and signal transduction, and expression of this gene plays a critical role in the suppression of cancer cell motility and metastasis. [provided by RefSeq, Jan 2011],function:Involved in platelet activation and aggregation. Regulates paranodal junction formation. Involved in cell adhesion, cell motility and tumor metastasis. Required for sperm-egg fusion.,PTM:Protein exists in three forms with molecular masses between 22 and 27 kDa, and is known to carry covalently linked fatty acids.,similarity:Belongs to the tetraspanin (TM4SF) family.,subunit:Forms both disulfide-linked homodimers and higher homooligomers as well as heterooligomers with other members of the tetraspanin family. Associates with CR2/CD21 and with PTGFRN/CD9P1. Interacts directly with IGSF8.,tissue specificity:Expressed by a variety of hematopoietic and epithelial cells.,

## Research Area

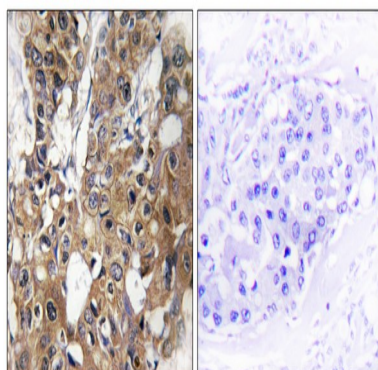
Hematopoietic cell lineage;

## Image Data

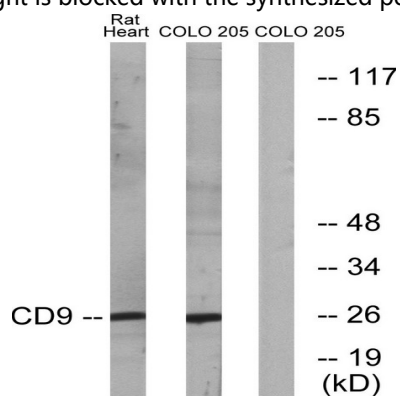


Immunofluorescence analysis of HeLa cells, using CD9 Antibody. The picture on the right is blocked with the synthesized peptide.

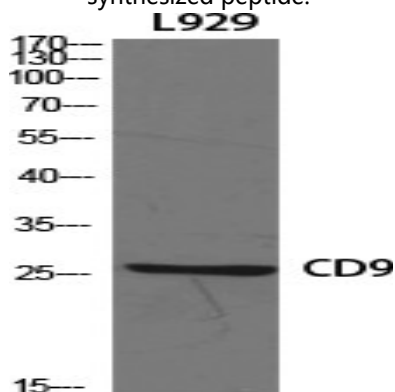
**Product Name: CD9 Rabbit Polyclonal Antibody**  
**Catalog #: APRab08483**



Immunohistochemistry analysis of paraffin-embedded human breast carcinoma tissue, using CD9 Antibody. The picture on the right is blocked with the synthesized peptide.



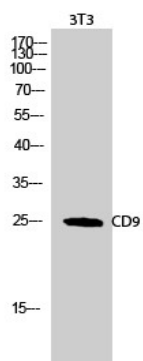
Western blot analysis of lysates from rat heart and COLO cells, using CD9 Antibody. The lane on the right is blocked with the synthesized peptide.



Western Blot analysis of various cells using CD9 Polyclonal Antibody diluted at 1: 1000

**Product Name: CD9 Rabbit Polyclonal Antibody**  
**Catalog #: APRab08483**

---



Western Blot analysis of 3T3 cells using CD9 Polyclonal Antibody diluted at 1 : 1000

**Note**

For research use only.