

Product Name: CD88 Rabbit Polyclonal Antibody
Catalog #: APRab08477



Summary

Production Name	CD88 Rabbit Polyclonal Antibody
Description	Rabbit Polyclonal Antibody
Host	Rabbit
Application	IF,IHC,WB,
Reactivity	Human,Rat,Mouse

Performance

Conjugation	Unconjugated
Modification	Unmodified
Isotype	IgG
Clonality	Polyclonal
Form	Liquid
Storage	Store at 4°C short term. Aliquot and store at -20°C long term. Avoid freeze/thaw cycles.
Buffer	Liquid in PBS containing 50% glycerol, 0.5% BSA and 0.02% New type preservative N.
Purification	Affinity purification

Immunogen

Gene Name	C5AR1
Alternative Names	C5AR1; C5AR; C5R1; C5a anaphylatoxin chemotactic receptor; C5a-R; C5aR; CD antigen CD88
Gene ID	728.0
SwissProt ID	P21730.The antiserum was produced against synthesized peptide derived from human N ternal CD88/C5aR. AA range:301-350

Application

Dilution Ratio	WB 1:500 - 1:2000 IHC 1:100 - 1:300. IF 1:200 - 1:1000. ELISA: 1:5000. Not yet tested in other applications.
Molecular Weight	45kD

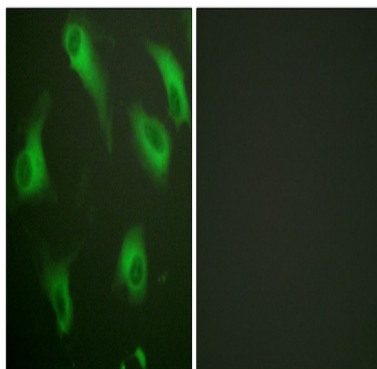
Background

function: Receptor for the chemotactic and inflammatory peptide anaphylatoxin C5a. This receptor stimulates chemotaxis, granule enzyme release and superoxide anion production.,PTM: Sulfation plays a critical role in the association of the receptor with C5a, but no significant role in the ability of the receptor to transduce a signal and mobilize calcium in response to a small peptide agonist.,similarity: Belongs to the G-protein coupled receptor 1 family.,function: Receptor for the chemotactic and inflammatory peptide anaphylatoxin C5a. This receptor stimulates chemotaxis, granule enzyme release and superoxide anion production.,PTM: Sulfation plays a critical role in the association of the receptor with C5a, but no significant role in the ability of the receptor to transduce a signal and mobilize calcium in response to a small peptide agonist.,similarity: Belongs to the G-protein coupled receptor 1 family.,

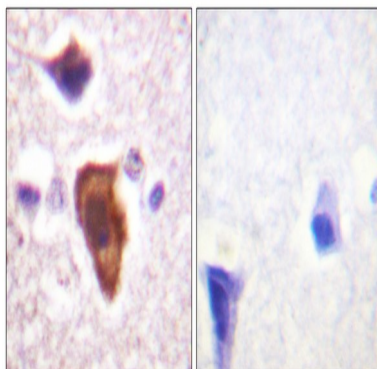
Research Area

Neuroactive ligand-receptor interaction; Complement and coagulation cascades;

Image Data

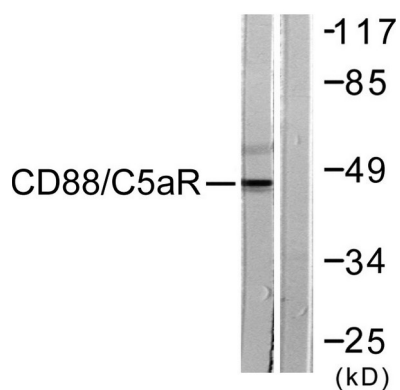


Immunofluorescence analysis of HeLa cells, using CD88/C5aR Antibody. The picture on the right is blocked with the synthesized peptide.

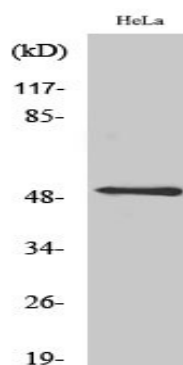


Immunohistochemistry analysis of paraffin-embedded human brain tissue, using CD88/C5aR Antibody. The picture on the right is blocked with the synthesized peptide.

Product Name: CD88 Rabbit Polyclonal Antibody
Catalog #: APRab08477



Western blot analysis of lysates from HeLa cells, treated with PMA 125ng/ml 30 ', using CD88/C5aR Antibody. The lane on the right is blocked with the synthesized peptide.



Western Blot analysis of various cells using CD88 Polyclonal Antibody

Note

For research use only.