

Product Name: CD80 Rabbit Polyclonal Antibody
Catalog #: APRab08462



Summary

| | |
|------------------------|---------------------------------|
| Production Name | CD80 Rabbit Polyclonal Antibody |
| Description | Rabbit Polyclonal Antibody |
| Host | Rabbit |
| Application | IHC,ELISA |
| Reactivity | Human,Rat,Mouse |

Performance

| | |
|---------------------|--|
| Conjugation | Unconjugated |
| Modification | Unmodified |
| Isotype | IgG |
| Clonality | Polyclonal |
| Form | Liquid |
| Storage | Store at 4°C short term. Aliquot and store at -20°C long term. Avoid freeze/thaw cycles. |
| Buffer | Liquid in PBS containing 50% glycerol, 0.5% BSA and 0.02% New type preservative N. |
| Purification | Affinity purification |

Immunogen

| | |
|--------------------------|--|
| Gene Name | CD80 CD28LG CD28LG1 LAB7 |
| Alternative Names | T-lymphocyte activation antigen CD80 (Activation B7-1 antigen;BB1;CTLA-4 counter-receptor B7.1;B7;CD antigen CD80) |
| Gene ID | 941.0 |
| SwissProt ID | P33681.Synthetic peptide from human protein at AA range: 100-160 |

Application

| | |
|-------------------------|----------------------------------|
| Dilution Ratio | IHC 1:50-200 ELISA 1:10000-20000 |
| Molecular Weight | |

Background

The protein encoded by this gene is a membrane receptor that is activated by the binding of CD28 or CTLA-4. The

Product Name: CD80 Rabbit Polyclonal Antibody
Catalog #: APRab08462

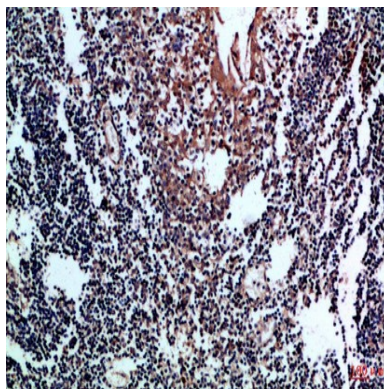


activated protein induces T-cell proliferation and cytokine production. This protein can act as a receptor for adenovirus subgroup B and may play a role in lupus neuropathy. [provided by RefSeq, Aug 2011],function:Involved in the costimulatory signal essential for T-lymphocyte activation. T-cell proliferation and cytokine production is induced by the binding of CD28 or CTLA-4 to this receptor.,similarity:Contains 1 Ig-like C2-type (immunoglobulin-like) domain.,similarity:Contains 1 Ig-like V-type (immunoglobulin-like) domain.,subunit:Interacts with adenovirus subgroup B fiber proteins and acts as a receptor for these viruses.,tissue specificity:Expressed on activated B-cells, macrophages and dendritic cells.,

Research Area

Cell adhesion molecules (CAMs);Toll_Like;Intestinal immune network for IgA production;Type I diabetes mellitus;Autoimmune thyroid disease;Systemic lupus erythematosus;Allograft rejection;Graft-versus-host disease;Viral myocarditis;

Image Data



Immunohistochemical analysis of paraffin-embedded Human-tonsil, antibody was diluted at 1:100

Note

For research use only.