

Product Name: CD64 Rabbit Polyclonal Antibody
Catalog #: APRab08431

Summary

Production Name	CD64 Rabbit Polyclonal Antibody
Description	Rabbit Polyclonal Antibody
Host	Rabbit
Application	WB,IHC,ELISA
Reactivity	Human,Rat,Mouse

Performance

Conjugation	Unconjugated
Modification	Unmodified
Isotype	IgG
Clonality	Polyclonal
Form	Liquid
Storage	Store at 4°C short term. Aliquot and store at -20°C long term. Avoid freeze/thaw cycles.
Buffer	Liquid in PBS containing 50% glycerol, 0.5% BSA and 0.02% New type preservative N.
Purification	Affinity purification

Immunogen

Gene Name	FCGR1A FCG1 FCGR1 IGFR1
Alternative Names	High affinity immunoglobulin gamma Fc receptor I (IgG Fc receptor I;Fc-gamma RI;FcRI;Fc-gamma RIA;FcgammaRIa;CD antigen CD64)
Gene ID	2209.0
SwissProt ID	P12314.Synthetic peptide from human protein at AA range: 230-280

Application

Dilution Ratio	WB 1:500-2000,IHC-p 1:500-200, ELISA 1:10000-20000.
Molecular Weight	45kD

Background

Product Name: CD64 Rabbit Polyclonal Antibody
Catalog #: APRab08431

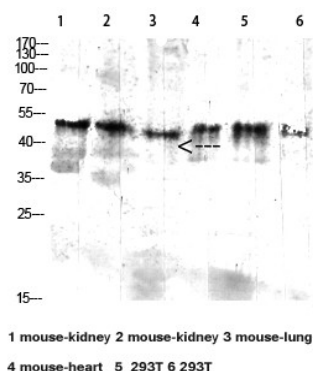


This gene encodes a protein that plays an important role in the immune response. This protein is a high-affinity Fc-gamma receptor. The gene is one of three related gene family members located on chromosome 1. [provided by RefSeq, Jul 2008],function:High affinity receptor for the Fc region of immunoglobulins gamma. Functions in both innate and adaptive immune responses.,online information:FCGR1A mutation db,PTM:N-glycosylated.,PTM:Phosphorylated on serine residues.,similarity:Belongs to the immunoglobulin superfamily. FCGR1 family.,similarity:Contains 3 Ig-like C2-type (immunoglobulin-like) domains.,subcellular location:Stabilized at the cell membrane through interaction with FCER1G.,subunit:Interacts with FCERG1; forms a functional signaling complex. Interacts with FLNA; prevents FCGR1A degradation. Interacts with EPB41L2, LAT and PPL.,tissue specificity:Monocyte/macrophage specific.,

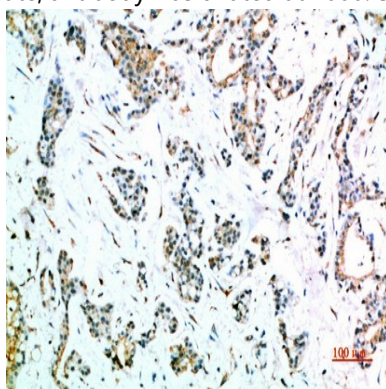
Research Area

Hematopoietic cell lineage;Fc gamma R-mediated phagocytosis;Systemic lupus erythematosus;

Image Data

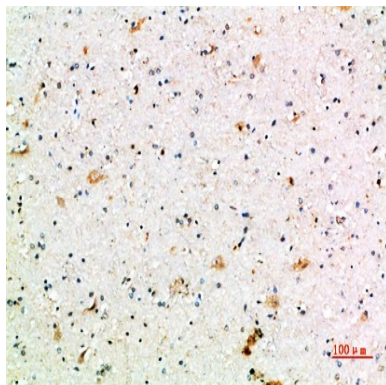


Western blot analysis of mouse-kidney lysate, antibody was diluted at 2000. Secondary antibody was diluted at 1:20000



Immunohistochemical analysis of paraffin-embedded human-stomach-cancer, antibody was diluted at 1:200

Product Name: CD64 Rabbit Polyclonal Antibody
Catalog #: APRab08431



Immunohistochemical analysis of paraffin-embedded human-brain, antibody was diluted at 1:200

Note

For research use only.