

Product Name: CD32-A Rabbit Polyclonal Antibody
Catalog #: APRab08366



Summary

Production Name	CD32-A Rabbit Polyclonal Antibody
Description	Rabbit Polyclonal Antibody
Host	Rabbit
Application	WB,ELISA
Reactivity	Human,Rat,Mouse

Performance

Conjugation	Unconjugated
Modification	Unmodified
Isotype	IgG
Clonality	Polyclonal
Form	Liquid
Storage	Store at 4°C short term. Aliquot and store at -20°C long term. Avoid freeze/thaw cycles.
Buffer	Liquid in PBS containing 50% glycerol, 0.5% BSA and 0.02% New type preservative N.
Purification	Affinity purification

Immunogen

Gene Name	FCGR2A FCGR2A; CD32; FCG2; FCGR2A1; IGFR2; Low affinity immunoglobulin gamma Fc region
Alternative Names	receptor II-a; IgG Fc receptor II-a; CDw32; Fc-gamma RII-a; Fc-gamma-RIIa; FcRII-a; CD32
Gene ID	2212.0
SwissProt ID	P12318.The antiserum was produced against synthesized peptide derived from the N-terminal region of human FCGR2A. AA range:41-90

Application

Dilution Ratio	WB 1:500 - 1:2000. ELISA: 1:20000
Molecular Weight	34kD

Product Name: CD32-A Rabbit Polyclonal Antibody
Catalog #: APRab08366



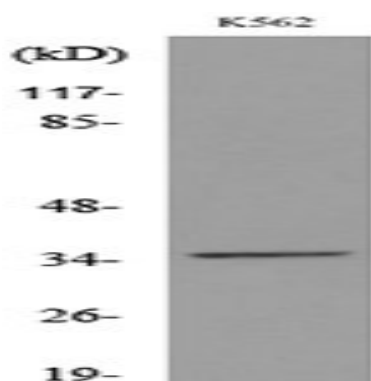
Background

Fc fragment of IgG receptor IIa(FCGR2A) Homo sapiens This gene encodes one member of a family of immunoglobulin Fc receptor genes found on the surface of many immune response cells. The protein encoded by this gene is a cell surface receptor found on phagocytic cells such as macrophages and neutrophils, and is involved in the process of phagocytosis and clearing of immune complexes. Alternative splicing results in multiple transcript variants. [provided by RefSeq, Oct 2008],function: Binds to the Fc region of immunoglobulins gamma. Low affinity receptor. By binding to IgG it initiates cellular responses against pathogens and soluble antigens.,similarity: Contains 2 Ig-like C2-type (immunoglobulin-like) domains.,subunit: Interacts with INPP5D/SHIP1 and INPPL1/SHIP2, regulating its function.,tissue specificity: Found on monocytes, neutrophils and eosinophil platelets.,

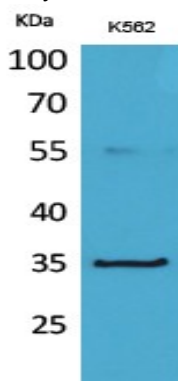
Research Area

Fc gamma R-mediated phagocytosis; Systemic lupus erythematosus;

Image Data



Western blot analysis of lysate from K562 cells, using FCGR2A Antibody.



Western Blot analysis of K562 cells using CD32-A Polyclonal Antibody.. Secondary antibody was diluted at 1:20000

Product Name: CD32-A Rabbit Polyclonal Antibody
Catalog #: APRab08366



Note

For research use only.