

Product Name: CD327 Rabbit Polyclonal Antibody
Catalog #: APRab08362



Summary

Production Name	CD327 Rabbit Polyclonal Antibody
Description	Rabbit Polyclonal Antibody
Host	Rabbit
Application	IHC,ELISA
Reactivity	Human,Rat,Mouse

Performance

Conjugation	Unconjugated
Modification	Unmodified
Isotype	IgG
Clonality	Polyclonal
Form	Liquid
Storage	Store at 4°C short term. Aliquot and store at -20°C long term. Avoid freeze/thaw cycles.
Buffer	Liquid in PBS containing 50% glycerol, 0.5% BSA and 0.02% New type preservative N.
Purification	Affinity purification

Immunogen

Gene Name	SIGLEC6 CD33L CD33L1 OBBP1
Alternative Names	Sialic acid-binding Ig-like lectin 6 (Siglec-6;CD33 antigen-like 1;CDw327;Obesity-binding protein 1;OB-BP1;CD antigen CD327)
Gene ID	946.0
SwissProt ID	O43699.Synthetic peptide from human protein at AA range: 71-120

Application

Dilution Ratio	IHC 1:50-200 ELISA 1:10000-20000
Molecular Weight	

Background

This gene encodes a member of the SIGLEC (sialic acid binding immunoglobulin-like lectin) family of proteins. The encoded

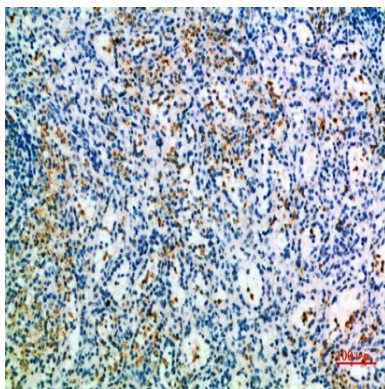
Product Name: CD327 Rabbit Polyclonal Antibody
Catalog #: APRab08362



transmembrane receptor binds sialyl-TN glycans and leptin. Placental expression of the encoded protein is upregulated in preeclampsia. [provided by RefSeq, Jul 2016],domain:Contains 1 copy of a cytoplasmic motif that is referred to as the immunoreceptor tyrosine-based inhibitor motif (ITIM). This motif is involved in modulation of cellular responses. The phosphorylated ITIM motif can bind the SH2 domain of several SH2-containing phosphatases.,function:Putative adhesion molecule that mediates sialic-acid dependent binding to cells. Binds to alpha-2,6-linked sialic acid. The sialic acid recognition site may be masked by cis interactions with sialic acids on the same cell surface.,online information:Siglec-6,similarity:Belongs to the immunoglobulin superfamily. SIGLEC (sialic acid binding Ig-like lectin) family.,similarity:Contains 1 Ig-like V-type (immunoglobulin-like) domain.,similarity:Contains 2 Ig-like C2-type (immunoglobulin-like) domains.,subunit:Interacts with LEP.,tissue specificity:Expressed at high levels in placenta (cyto-and syncytiotrophoblastic cells) and at lower levels in spleen, peripheral blood leukocytes (predominantly B-cells) and small intestine.,

Research Area

Image Data



Immunohistochemical analysis of paraffin-embedded human-spleen, antibody was diluted at 1:200

Note

For research use only.