

Product Name: CD30-L Rabbit Polyclonal Antibody
Catalog #: APRab08351



Summary

Production Name	CD30-L Rabbit Polyclonal Antibody
Description	Rabbit Polyclonal Antibody
Host	Rabbit
Application	WB,ELISA
Reactivity	Human,Rat,Mouse

Performance

Conjugation	Unconjugated
Modification	Unmodified
Isotype	IgG
Clonality	Polyclonal
Form	Liquid
Storage	Store at 4°C short term. Aliquot and store at -20°C long term. Avoid freeze/thaw cycles.
Buffer	Liquid in PBS containing 50% glycerol, 0.5% BSA and 0.02% New type preservative N.
Purification	Affinity purification

Immunogen

Gene Name	TNFSF8
Alternative Names	TNFSF8; CD30L; CD30LG; Tumor necrosis factor ligand superfamily member 8; CD30 ligand; CD30-L; CD antigen CD153
Gene ID	2965.0
SwissProt ID	P32971.The antiserum was produced against synthesized peptide derived from human CD153. AA range:71-120

Application

Dilution Ratio	WB 1:500 - 1:2000. ELISA: 1:20000
Molecular Weight	30kD

Product Name: CD30-L Rabbit Polyclonal Antibody
Catalog #: APRab08351



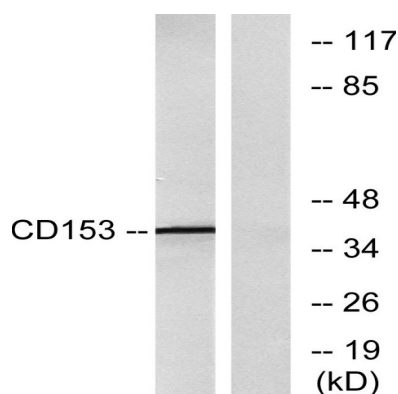
Background

The protein encoded by this gene is a cytokine that belongs to the tumor necrosis factor (TNF) ligand family. This cytokine is a ligand for TNFRSF8/CD30, which is a cell surface antigen and a marker for Hodgkin lymphoma and related hematologic malignancies. The engagement of this cytokine expressed on B cell surface plays an inhibitory role in modulating Ig class switch. This cytokine was shown to enhance cell proliferation of some lymphoma cell lines, while to induce cell death and reduce cell proliferation of other lymphoma cell lines. The pleiotropic biologic activities of this cytokine on different CD30+ lymphoma cell lines may play a pathophysiologic role in Hodgkin's and some non-Hodgkin's lymphomas. Two transcript variants encoding different isoforms have been found for this gene. [provided by RefSeq, Nov 2011],function:Cytokine that binds to TNFRSF8/CD30. Induces proliferation of T-cells.,similarity:Belongs to the tumor necrosis factor family.,subunit:Homotrimer.,

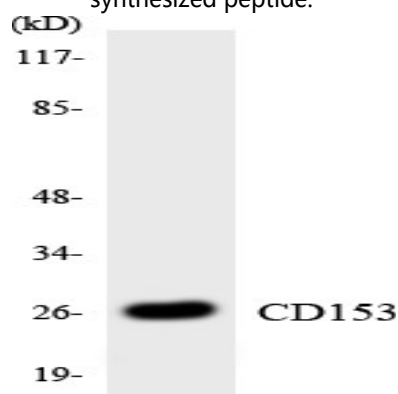
Research Area

Cytokine-cytokine receptor interaction;

Image Data



Western blot analysis of lysates from RAW264.7 cells, using CD153 Antibody. The lane on the right is blocked with the synthesized peptide.



Western blot analysis of the lysates from K562 cells using CD153 antibody.

Product Name: CD30-L Rabbit Polyclonal Antibody
Catalog #: APRab08351



Note

For research use only.