

Product Name: CD300c Rabbit Polyclonal Antibody
Catalog #: APRab08341



Summary

Production Name	CD300c Rabbit Polyclonal Antibody
Description	Rabbit Polyclonal Antibody
Host	Rabbit
Application	WB,ELISA
Reactivity	Human,Rat,Mouse

Performance

Conjugation	Unconjugated
Modification	Unmodified
Isotype	IgG
Clonality	Polyclonal
Form	Liquid
Storage	Store at 4°C short term. Aliquot and store at -20°C long term. Avoid freeze/thaw cycles.
Buffer	Liquid in PBS containing 50% glycerol, 0.5% BSA and 0.02% New type preservative N.
Purification	Affinity purification

Immunogen

Gene Name	CD300C CD300C; CMRF35; CMRF35A; CMRF35A1; IGSF16; CMRF35-like molecule 6; CLM-6;
Alternative Names	CD300 antigen-like family member C; CMRF35-A1; CMRF-35; Immunoglobulin superfamily member 16; IgSF16; CD300c
Gene ID	10871.0
SwissProt ID	Q08708.The antiserum was produced against synthesized peptide derived from the Internal region of human CD300C. AA range:131-180

Application

Dilution Ratio	WB 1:500 - 1:2000. ELISA: 1:10000
Molecular Weight	37kD

Product Name: CD300c Rabbit Polyclonal Antibody
Catalog #: APRab08341

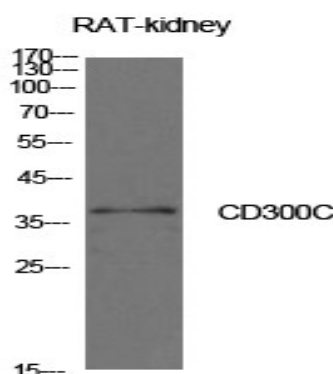


Background

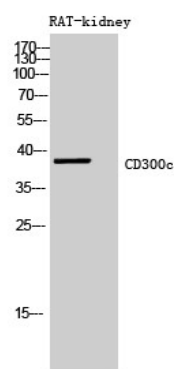
CD300c molecule(CD300C) Homo sapiens The CMRF35 antigen, which was identified by reactivity with a monoclonal antibody, is present on monocytes, neutrophils, and some T and B lymphocytes (Jackson et al., 1992 [PubMed 1349532]). [supplied by OMIM, Mar 2008],similarity:Belongs to the CD300 family.,similarity:Contains 1 Ig-like V-type (immunoglobulin-like) domain.,tissue specificity:Present on the surface of monocytes, neutrophils, a proportion of peripheral blood T- and B-lymphocytes and lymphocytic cell lines.,

Research Area

Image Data



Western Blot analysis of rat kidney cells using CD300c Polyclonal Antibody. Antibody was diluted at 1:500. Secondary antibody was diluted at 1:20000



Western Blot analysis of RAT-kidney cells using CD300c Polyclonal Antibody diluted at 1: 500. Secondary antibody was diluted at 1:20000

Note

For research use only.

Product Name: CD300c Rabbit Polyclonal Antibody
Catalog #: APRab08341

