

**Product Name: CD275 Rabbit Polyclonal Antibody**  
**Catalog #: APRab08322**



## Summary

|                        |                                  |
|------------------------|----------------------------------|
| <b>Production Name</b> | CD275 Rabbit Polyclonal Antibody |
| <b>Description</b>     | Rabbit Polyclonal Antibody       |
| <b>Host</b>            | Rabbit                           |
| <b>Application</b>     | IHC,ELISA                        |
| <b>Reactivity</b>      | Human,Rat,Mouse                  |

## Performance

|                     |  |
|---------------------|--|
| <b>Conjugation</b>  | Unconjugated   |
| <b>Modification</b> | Unmodified   |
| <b>Isotype</b>      | IgG  |
| <b>Clonality</b>    | Polyclonal   |
| <b>Form</b>         | Liquid   |
| <b>Storage</b>      | Store at 4°C short term. Aliquot and store at -20°C long term. Avoid freeze/thaw cycles. |
| <b>Buffer</b>       | Liquid in PBS containing 50% glycerol, 0.5% BSA and 0.02% New type preservative N.       |
| <b>Purification</b> | Affinity purification  |

## Immunogen

|                          |  |
|--------------------------|--|
| <b>Gene Name</b>         | ICOSLG B7H2 B7RP1 ICOSL KIAA0653   |
| <b>Alternative Names</b> | ICOS ligand (B7 homolog 2;B7-H2;B7-like protein GI50;B7-related protein 1;B7RP-1;CD antigen CD275) |
| <b>Gene ID</b>           | 23308.0  |
| <b>SwissProt ID</b>      | O75144.Synthetic peptide from human protein at AA range: 201-250                                   |

## Application

|                         |                                  |
|-------------------------|----------------------------------|
| <b>Dilution Ratio</b>   | IHC 1:50-200 ELISA 1:10000-20000 |
| <b>Molecular Weight</b> |                                  |

## Background

alternative products:Additional isoforms seem to exist,function:Ligand for the T-cell-specific cell surface receptor ICOS. Acts

**Product Name: CD275 Rabbit Polyclonal Antibody**  
**Catalog #: APRab08322**

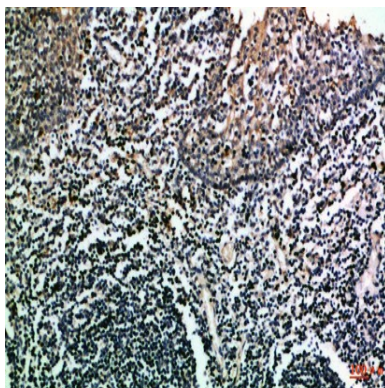


as a costimulatory signal for T-cell proliferation and cytokine secretion; induces also B-cell proliferation and differentiation into plasma cells. Could play an important role in mediating local tissue responses to inflammatory conditions, as well as in modulating the secondary immune response by co-stimulating memory T-cell function.,induction:Constitutive expression is further enhanced by treatment with TNF-alpha in peripheral blood B-cells and monocytes, while it is decreased in dendritic cells.,sequence caution:The sequence differs from that shown in position 300 onward for unknown reason.,sequence caution:Translation N-terminally shortened.,similarity:Belongs to the immunoglobulin superfamily. BTN/MOG family.,similarity:Contains 1 Ig-like C2-type (immunoglobulin-like) domain.,similarity:Contains 1 Ig-like V-type (immunoglobulin-like) domain.,tissue specificity:Isoform 1 is widely expressed (brain, heart, kidney, liver, lung, pancreas, placenta, skeletal muscle, bone marrow, colon, ovary, prostate, testis, lymph nodes, leukocytes, spleen, thymus and tonsil), while isoform 2 is detected only in lymph nodes, leukocytes and spleen. Expressed on activated monocytes and dendritic cells.,alternative products:Additional isoforms seem to exist,function:Ligand for the T-cell-specific cell surface receptor ICOS. Acts as a costimulatory signal for T-cell proliferation and cytokine secretion; induces also B-cell proliferation and differentiation into plasma cells. Could play an important role in mediating local tissue responses to inflammatory conditions, as well as in modulating the secondary immune response by co-stimulating memory T-cell function.,induction:Constitutive expression is further enhanced by treatment with TNF-alpha in peripheral blood B-cells and monocytes, while it is decreased in dendritic cells.,sequence caution:The sequence differs from that shown in position 300 onward for unknown reason.,sequence caution:Translation N-terminally shortened.,similarity:Belongs to the immunoglobulin superfamily. BTN/MOG family.,similarity:Contains 1 Ig-like C2-type (immunoglobulin-like) domain.,similarity:Contains 1 Ig-like V-type (immunoglobulin-like) domain.,tissue specificity:Isoform 1 is widely expressed (brain, heart, kidney, liver, lung, pancreas, placenta, skeletal muscle, bone marrow, colon, ovary, prostate, testis, lymph nodes, leukocytes, spleen, thymus and tonsil), while isoform 2 is detected only in lymph nodes, leukocytes and spleen. Expressed on activated monocytes and dendritic cells.,

## Research Area

Cell adhesion molecules (CAMs);Intestinal immune network for IgA production;

## Image Data



**Product Name: CD275 Rabbit Polyclonal Antibody**  
**Catalog #: APRab08322**



---

Immunohistochemical analysis of paraffin-embedded Human-tonsil, antibody was diluted at 1:100

**Note**

For research use only.