

**Product Name: CD249 Rabbit Polyclonal Antibody**  
**Catalog #: APRab08308**



## Summary

<b>Production Name</b>	CD249 Rabbit Polyclonal Antibody
<b>Description</b>	Rabbit Polyclonal Antibody
<b>Host</b>	Rabbit
<b>Application</b>	WB,IHC,ELISA
<b>Reactivity</b>	Human,Mouse,Rat

## Performance

<b>Conjugation</b>	Unconjugated
<b>Modification</b>	Unmodified
<b>Isotype</b>	IgG
<b>Clonality</b>	Polyclonal
<b>Form</b>	Liquid
<b>Storage</b>	Store at 4°C short term. Aliquot and store at -20°C long term. Avoid freeze/thaw cycles.
<b>Buffer</b>	Liquid in PBS containing 50% glycerol, 0.5% BSA and 0.02% New type preservative N.
<b>Purification</b>	Affinity purification

## Immunogen

<b>Gene Name</b>	ENPEP
<b>Alternative Names</b>	ENPEP; Glutamyl aminopeptidase; EAP; Aminopeptidase A; AP-A; Differentiation antigen gp160; CD249
<b>Gene ID</b>	2028.0
<b>SwissProt ID</b>	Q07075.The antiserum was produced against synthesized peptide derived from the Internal region of human ENPEP. AA range:671-720

## Application

<b>Dilution Ratio</b>	WB 1:500 - 1:2000. IHC-p: 1:100-1:300. ELISA: 1:10000..
<b>Molecular Weight</b>	110kD

**Product Name: CD249 Rabbit Polyclonal Antibody**  
**Catalog #: APRab08308**



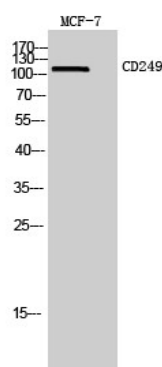
## Background

catalytic activity:Release of N-terminal glutamate (and to a lesser extent aspartate) from a peptide.,cofactor:Binds 1 zinc ion per subunit.,function:Appears to have a role in the catabolic pathway of the renin-angiotensin system. Probably plays a role in regulating growth and differentiation of early B-lineage cells.,similarity:Belongs to the peptidase M1 family.,subunit:Homodimer; disulfide-linked.,tissue specificity:Expressed by epithelial cells of the proximal tubule cells and the glomerulus of the nephron. Also found in a variety of other tissues.,catalytic activity:Release of N-terminal glutamate (and to a lesser extent aspartate) from a peptide.,cofactor:Binds 1 zinc ion per subunit.,function:Appears to have a role in the catabolic pathway of the renin-angiotensin system. Probably plays a role in regulating growth and differentiation of early B-lineage cells.,similarity:Belongs to the peptidase M1 family.,subunit:Homodimer; disulfide-linked.,tissue specificity:Expressed by epithelial cells of the proximal tubule cells and the glomerulus of the nephron. Also found in a variety of other tissues.,

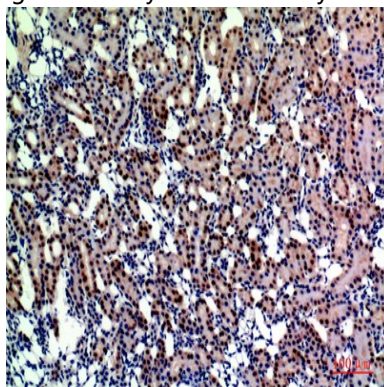
## Research Area

Renin-angiotensin system;

## Image Data



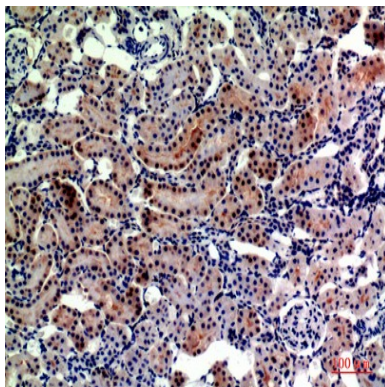
Western Blot analysis of MCF7 cells using CD249 Polyclonal Antibody.. Secondary antibody was diluted at 1:20000



Immunohistochemical analysis of paraffin-embedded rat-kidney, antibody was diluted at 1:200

**Product Name: CD249 Rabbit Polyclonal Antibody**  
**Catalog #: APRab08308**

---



Immunohistochemical analysis of paraffin-embedded rat-kidney, antibody was diluted at 1:200

**Note**

For research use only.