

Product Name: CD242 Rabbit Polyclonal Antibody
Catalog #: APRab08305



Summary

Production Name	CD242 Rabbit Polyclonal Antibody
Description	Rabbit Polyclonal Antibody
Host	Rabbit
Application	IHC,ELISA
Reactivity	Human,Mouse

Performance

Conjugation	Unconjugated
Modification	Unmodified
Isotype	IgG
Clonality	Polyclonal
Form	Liquid
Storage	Store at 4°C short term. Aliquot and store at -20°C long term. Avoid freeze/thaw cycles.
Buffer	Liquid in PBS containing 50% glycerol, 0.5% BSA and 0.02% New type preservative N.
Purification	Affinity purification

Immunogen

Gene Name	ICAM4 LW
Alternative Names	Intercellular adhesion molecule 4 (ICAM-4;Landsteiner-Wiener blood group glycoprotein;LW blood group protein;CD antigen CD242)
Gene ID	3386.0
SwissProt ID	Q14773.Synthetic peptide from human protein at AA range: 141-190

Application

Dilution Ratio	IHC 1:50-200 ELISA 1:10000-20000
Molecular Weight	

Background

This gene encodes the Landsteiner-Wiener (LW) blood group antigen(s) that belongs to the immunoglobulin (Ig)

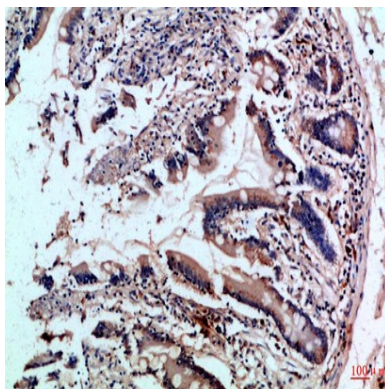
Product Name: CD242 Rabbit Polyclonal Antibody
Catalog #: APRab08305



superfamily, and that shares similarity with the intercellular adhesion molecule (ICAM) protein family. This ICAM protein contains 2 Ig-like C2-type domains and binds to the leukocyte adhesion LFA-1 protein. The molecular basis of the LW(A)/LW(B) blood group antigens is a single aa variation at position 100; Gln-100=LW(A) and Arg-100=LW(B). Alternative splicing results in multiple transcript variants encoding distinct isoforms. [provided by RefSeq, Jul 2008],function:ICAM proteins are ligands for the leukocyte adhesion protein LFA-1 (integrin alpha-L/beta-2). ICAM4 is also a ligand for alpha-4/beta-1 and alpha-V integrins.,online information:Blood group antigen gene mutation database,polymorphism:Responsible for the Landsteiner-Wiener blood group system. The molecular basis of the LW(A)=LW5/LW(B)=LW7 blood group antigens is a single variation in position 100; Gln-100 corresponds to LW(A) and Arg-100 to LW(B).,PTM:N- and O-glycosylated.,similarity:Belongs to the immunoglobulin superfamily. ICAM family.,similarity:Contains 2 Ig-like C2-type (immunoglobulin-like) domains.,tissue specificity:Erythrocytes.,

Research Area

Image Data



Immunohistochemical analysis of paraffin-embedded Human-colon, antibody was diluted at 1:100

Note

For research use only.