

Summary

Production Name	CD207 Rabbit Polyclonal Antibody
Description	Rabbit Polyclonal Antibody
Host	Rabbit
Application	WB,ELISA
Reactivity	Human,Rat,Mouse

Performance

Conjugation	Unconjugated
Modification	Unmodified
Isotype	IgG
Clonality	Polyclonal
Form	Liquid
Storage	Store at 4°C short term. Aliquot and store at -20°C long term. Avoid freeze/thaw cycles.
Buffer	Liquid in PBS containing 50% glycerol, 0.5% BSA and 0.02% New type preservative N.
Purification	Affinity purification

Immunogen

Gene Name	CD207
Alternative Names	CD207; CLEC4K; C-type lectin domain family 4 member K; Langerin; CD207
Gene ID	50489.0
SwissProt ID	Q9UJ71.The antiserum was produced against synthesized peptide derived from the Internal region of human CD207. AA range:61-110

Application

Dilution Ratio	WB 1:500 - 1:2000. ELISA: 1:20000
Molecular Weight	38kD

Background

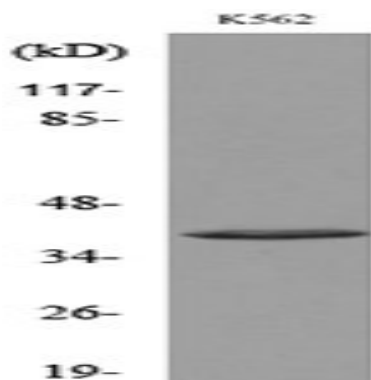
Product Name: CD207 Rabbit Polyclonal Antibody
Catalog #: APRab08277



The protein encoded by this gene is expressed only in Langerhans cells which are immature dendritic cells of the epidermis and mucosa. It is localized in the Birbeck granules, organelles present in the cytoplasm of Langerhans cells and consisting of superimposed and zippered membranes. It is a C-type lectin with mannose binding specificity, and it has been proposed that mannose binding by this protein leads to internalization of antigen into Birbeck granules and providing access to a nonclassical antigen-processing pathway. Mutations in this gene result in Birbeck granules deficiency or loss of sugar binding activity. [provided by RefSeq, Aug 2010],function:Calcium-dependent lectin displaying mannose-binding specificity, Induces the formation of Birbeck granules (BGs); is a potent regulator of membrane superimposition and zippering.,online information:Langerin,similarity:Contains 1 C-type lectin domain.,subcellular location:Found in Birbeck granules (BGs), which are organelles consisting of superimposed and zippered membranes.,tissue specificity:Exclusively expressed by Langerhans cells.,

Research Area

Image Data



Western blot analysis of lysate from K562 cells, using CD207 Antibody.



Western Blot analysis of K562 cells using CD207 Polyclonal Antibody.. Secondary antibody was diluted at 1:20000

Product Name: CD207 Rabbit Polyclonal Antibody
Catalog #: APRab08277



Note

For research use only.