

Product Name: CD201 Rabbit Polyclonal Antibody
Catalog #: APRab08272



Summary

Production Name	CD201 Rabbit Polyclonal Antibody
Description	Rabbit Polyclonal Antibody
Host	Rabbit
Application	WB,IHC,ELISA
Reactivity	Human,Mouse,Rat

Performance

Conjugation	Unconjugated
Modification	Unmodified
Isotype	IgG
Clonality	Polyclonal
Form	Liquid
Storage	Store at 4°C short term. Aliquot and store at -20°C long term. Avoid freeze/thaw cycles.
Buffer	Liquid in PBS containing 50% glycerol, 0.5% BSA and 0.02% New type preservative N.
Purification	Affinity purification

Immunogen

Gene Name	PROCR
Alternative Names	PROCR; EPCR; Endothelial protein C receptor; Activated protein C receptor; APC receptor; Endothelial cell protein C receptor; CD201
Gene ID	10544.0
SwissProt ID	Q9UNN8.Synthesized peptide derived from Endothelial protein C receptor at AA range: 141-190

Application

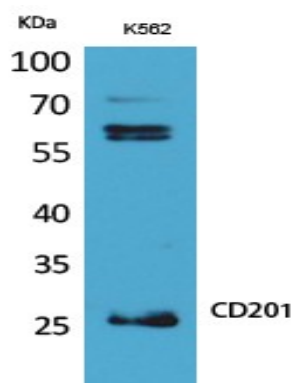
Dilution Ratio	WB 1:500 - 1:2000. IHC: 1:100-300 ELISA: 1:20000..
Molecular Weight	26kD

Background

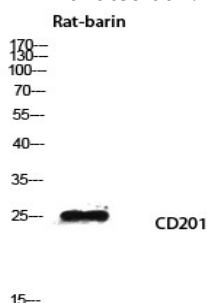
The protein encoded by this gene is a receptor for activated protein C, a serine protease activated by and involved in the blood coagulation pathway. The encoded protein is an N-glycosylated type I membrane protein that enhances the activation of protein C. Mutations in this gene have been associated with venous thromboembolism and myocardial infarction, as well as with late fetal loss during pregnancy. The encoded protein may also play a role in malarial infection and has been associated with cancer. [provided by RefSeq, Jul 2013],function: Binds activated protein C. Enhances protein C activation by the thrombin-thrombomodulin complex; plays a role in the protein C pathway controlling blood coagulation.,PTM: A soluble form exists; probably released by a metalloprotease. Seems to have the same activity as the membrane-bound form.,PTM: N-glycosylated.,tissue specificity: Expressed strongly in the endothelial cells of arteries and veins in heart and lung, less intensely in capillaries in the lung and skin, and not at all in the endothelium of small vessels of the liver and kidney.,

Research Area

Image Data



Western Blot analysis of K562 cells using CD201 Polyclonal Antibody. Antibody was diluted at 1:500. Secondary antibody was diluted at 1:20000

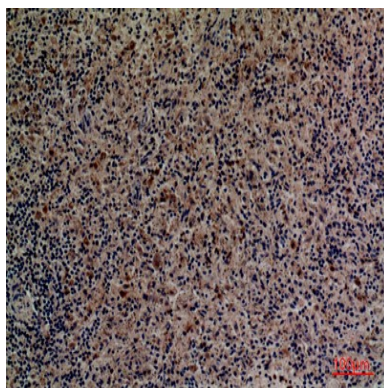


Western blot analysis of Rat-barin lysis using CD201 antibody. Antibody was diluted at 1:500. Secondary antibody was

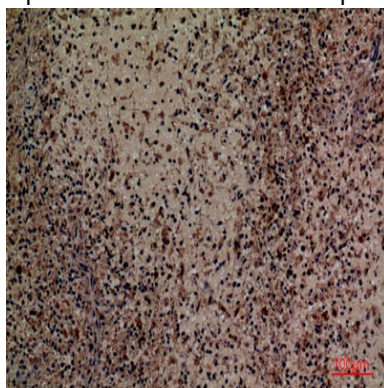
Product Name: CD201 Rabbit Polyclonal Antibody
Catalog #: APRab08272



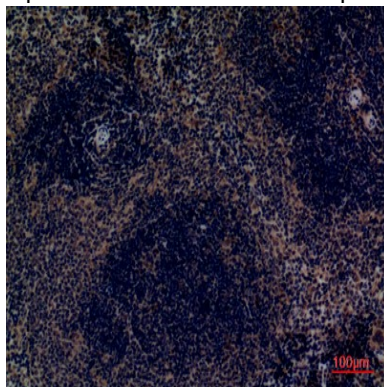
diluted at 1:20000



Immunohistochemical analysis of paraffin-embedded human-spleen, antibody was diluted at 1:100



Immunohistochemical analysis of paraffin-embedded human-spleen, antibody was diluted at 1:100



Immunohistochemical analysis of paraffin-embedded mouse-spleen, antibody was diluted at 1:100

Note

For research use only.