

**Product Name: CD192 Rabbit Polyclonal Antibody**  
**Catalog #: APRab08257**



## Summary

<b>Production Name</b>	CD192 Rabbit Polyclonal Antibody
<b>Description</b>	Rabbit Polyclonal Antibody
<b>Host</b>	Rabbit
<b>Application</b>	WB,ELISA
<b>Reactivity</b>	Human,Rat,Mouse

## Performance

<b>Conjugation</b>	Unconjugated
<b>Modification</b>	Unmodified
<b>Isotype</b>	IgG
<b>Clonality</b>	Polyclonal
<b>Form</b>	Liquid
<b>Storage</b>	Store at 4°C short term. Aliquot and store at -20°C long term. Avoid freeze/thaw cycles.
<b>Buffer</b>	Liquid in PBS containing 50% glycerol, 0.5% BSA and 0.02% New type preservative N.
<b>Purification</b>	Affinity purification

## Immunogen

<b>Gene Name</b>	CCR2
<b>Alternative Names</b>	CCR2; CMKBR2; C-C chemokine receptor type 2; C-C CKR-2; CC-CKR-2; CCR-2; CCR2; Monocyte chemoattractant protein 1 receptor; MCP-1-R; CD192
<b>Gene ID</b>	729230.0
<b>SwissProt ID</b>	P41597.The antiserum was produced against synthesized peptide derived from the N-terminal region of human CCR2. AA range:1-50

## Application

<b>Dilution Ratio</b>	WB 1:500 - 1:2000. ELISA: 1:10000
<b>Molecular Weight</b>	42kD

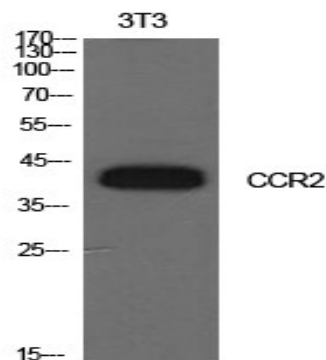
## Background

This gene encodes two isoforms of a receptor for monocyte chemoattractant protein-1, a chemokine which specifically mediates monocyte chemotaxis. Monocyte chemoattractant protein-1 is involved in monocyte infiltration in inflammatory diseases such as rheumatoid arthritis as well as in the inflammatory response against tumors. The receptors encoded by this gene mediate agonist-dependent calcium mobilization and inhibition of adenylyl cyclase. This gene is located in the chemokine receptor gene cluster region. Two alternatively spliced transcript variants are expressed by the gene. [provided by RefSeq, Mar 2009],function:Receptor for the MCP-1, MCP-3 and MCP-4 chemokines. Transduces a signal by increasing the intracellular calcium ions level. Alternative coreceptor with CD4 for HIV-1 infection.,online information:CC chemokine receptors entry,polymorphism:Variations in CCR2 are associated with relative resistance to immunodeficiency virus type 1 (resistance to HIV-1) [MIM:609423],.PTM:N-glycosylated.,similarity:Belongs to the G-protein coupled receptor 1 family.,subunit:Binds to HIV-1 Tat.,

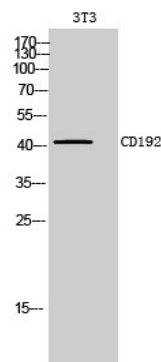
## Research Area

Cytokine-cytokine receptor interaction;Chemokine;

## Image Data



Western Blot analysis of NIH-3T3 cells using CD192 Polyclonal Antibody.. Secondary antibody was diluted at 1:20000



Western Blot analysis of 3T3 cells using CD192 Polyclonal Antibody. Secondary antibody was diluted at 1:20000

**Product Name: CD192 Rabbit Polyclonal Antibody**  
**Catalog #: APRab08257**

---



**Note**

For research use only.