

**Product Name: CD160 Rabbit Polyclonal Antibody**  
**Catalog #: APRab08236**



## Summary

<b>Production Name</b>	CD160 Rabbit Polyclonal Antibody
<b>Description</b>	Rabbit Polyclonal Antibody
<b>Host</b>	Rabbit
<b>Application</b>	WB,ELISA
<b>Reactivity</b>	Human,Rat,Mouse

## Performance

<b>Conjugation</b>	Unconjugated
<b>Modification</b>	Unmodified
<b>Isotype</b>	IgG
<b>Clonality</b>	Polyclonal
<b>Form</b>	Liquid
<b>Storage</b>	Store at 4°C short term. Aliquot and store at -20°C long term. Avoid freeze/thaw cycles.
<b>Buffer</b>	Liquid in PBS containing 50% glycerol, 0.5% BSA and 0.02% New type preservative N.
<b>Purification</b>	Affinity purification

## Immunogen

<b>Gene Name</b>	CD160
<b>Alternative Names</b>	CD160; BY55; CD160 antigen; Natural killer cell receptor BY55; CD antigen CD160
<b>Gene ID</b>	11126.0
<b>SwissProt ID</b>	O95971.The antiserum was produced against synthesized peptide derived from human CD160. AA range:21-70

## Application

<b>Dilution Ratio</b>	WB 1:500 - 1:2000. ELISA: 1:20000
<b>Molecular Weight</b>	17kD

## Background

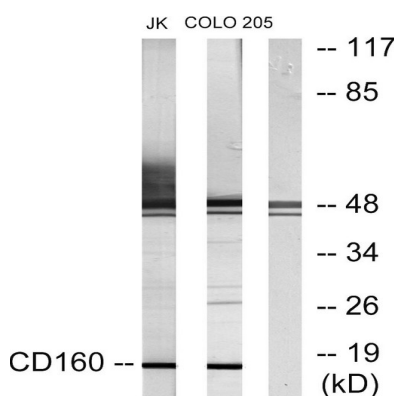
**Product Name: CD160 Rabbit Polyclonal Antibody**  
**Catalog #: APRab08236**



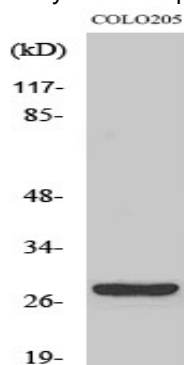
CD160 is an 27 kDa glycoprotein which was initially identified with the monoclonal antibody BY55. Its expression is tightly associated with peripheral blood NK cells and CD8 T lymphocytes with cytolytic effector activity. The cDNA sequence of CD160 predicts a cysteine-rich, glycosylphosphatidylinositol-anchored protein of 181 amino acids with a single Ig-like domain weakly homologous to KIR2DL4 molecule. CD160 is expressed at the cell surface as a tightly disulfide-linked multimer. RNA blot analysis revealed CD160 mRNAs of 1.5 and 1.6 kb whose expression was highly restricted to circulating NK and T cells, spleen and small intestine. Within NK cells CD160 is expressed by CD56dimCD16+ cells whereas among circulating T cells its expression is mainly restricted to TCRgd bearing cells and to TCRab+CD8brightCD95+CD56+CD28-CD27-cells. In tissues, CD160 is expressed on all intestinal intraepithelial lymphocytes. Cfunction:Receptor showing broad specificity for both classical and non-classical MHC class I molecules.,similarity:Contains 1 Ig-like V-type (immunoglobulin-like) domain.,subunit:Homomultimer; disulfide-linked.,tissue specificity:Expressed in spleen, peripheral blood, and small intestine. Expression is restricted to functional NK and T cytotoxic lymphocytes.,

## Research Area

## Image Data



Western blot analysis of lysates from Jurkat and COLO205 cells, using CD160 Antibody. The lane on the right is blocked with the synthesized peptide.



Western Blot analysis of various cells using CD160 Polyclonal Antibody

**Product Name: CD160 Rabbit Polyclonal Antibody**  
**Catalog #: APRab08236**

---



**Note**

For research use only.