

Product Name: CD159a/c Rabbit Polyclonal Antibody
Catalog #: APRab08232



Summary

Production Name	CD159a/c Rabbit Polyclonal Antibody
Description	Rabbit Polyclonal Antibody
Host	Rabbit
Application	WB,IHC,ELISA
Reactivity	Human,Rat,Mouse

Performance

Conjugation	Unconjugated
Modification	Unmodified
Isotype	IgG
Clonality	Polyclonal
Form	Liquid
Storage	Store at 4°C short term. Aliquot and store at -20°C long term. Avoid freeze/thaw cycles.
Buffer	Liquid in PBS containing 50% glycerol, 0.5% BSA and 0.02% New type preservative N.
Purification	Affinity purification

Immunogen

Gene Name	KLRC1/KLRC2/KLRC3 KLRC1; NKG2A; NKG2-A/NKG2-B type II integral membrane protein; CD159 antigen-like family member A; NK cell receptor A; NKG2-A/B-activating NK receptor; CD159a;
Alternative Names	KLRC2; NKG2C; NKG2-C type II integral membrane protein;CD159 antigen-like family member C; NK cell receptor C; NKG2-C-activating NK receptor; CD159c; KLRC3; NKG2E; NKG2-E type II integral membrane protein; NK cell receptor E; NKG2-E-activating NK receptor
Gene ID	3821.0
SwissProt ID	P26715.The antiserum was produced against synthesized peptide derived from the Internal region of human KLRC1/2/3. AA range:101-150

Application

Product Name: CD159a/c Rabbit Polyclonal Antibody
Catalog #: APRab08232



Dilution Ratio	WB 1:500 - 1:2000. IHC-p: 1:100-300 ELISA: 1:20000..
Molecular Weight	25kD

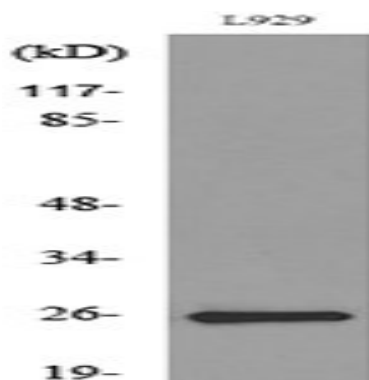
Background

Natural killer (NK) cells are lymphocytes that can mediate lysis of certain tumor cells and virus-infected cells without previous activation. They can also regulate specific humoral and cell-mediated immunity. The protein encoded by this gene belongs to the killer cell lectin-like receptor family, also called NKG2 family, which is a group of transmembrane proteins preferentially expressed in NK cells. This family of proteins is characterized by the type II membrane orientation and the presence of a C-type lectin domain. This protein forms a complex with another family member, KLRD1/CD94, and has been implicated in the recognition of the MHC class I HLA-E molecules in NK cells. The genes of NKG2 family members form a killer cell lectin-like receptor gene cluster on chromosome 12. Multiple alternatively spliced transcript variants encoding distinct isoforms have been observed. [providefunction:Plays a role as a receptor for the recognition of MHC class I HLA-E molecules by NK cells and some cytotoxic T-cells.,online information:NKG-2A,similarity:Contains 1 C-type lectin domain.,subunit:Can form disulfide-bonded heterodimer with CD94.,tissue specificity:Natural killer cells.,

Research Area

Antigen processing and presentation;Natural killer cell mediated cytotoxicity;Graft-versus-host disease;

Image Data

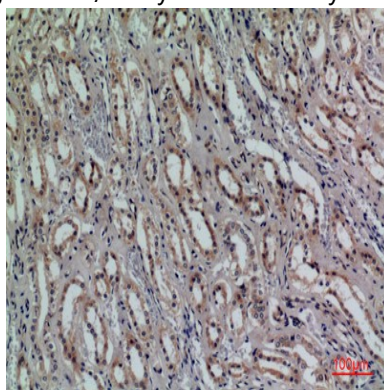


Western blot analysis of lysate from L929 cells, using KLRC1/2/3 Antibody.

Product Name: CD159a/c Rabbit Polyclonal Antibody
Catalog #: APRab08232



Western Blot analysis of L929 cells using CD159a/c Polyclonal Antibody.. Secondary antibody was diluted at 1:20000



Immunohistochemical analysis of paraffin-embedded human-kidney, antibody was diluted at 1:100

Note

For research use only.