

Product Name: CD108 Rabbit Polyclonal Antibody
Catalog #: APRab08189



Summary

Production Name	CD108 Rabbit Polyclonal Antibody
Description	Rabbit Polyclonal Antibody
Host	Rabbit
Application	IHC,ELISA
Reactivity	Human,Mouse,Rat

Performance

Conjugation	Unconjugated
Modification	Unmodified
Isotype	IgG
Clonality	Polyclonal
Form	Liquid
Storage	Store at 4°C short term. Aliquot and store at -20°C long term. Avoid freeze/thaw cycles.
Buffer	Liquid in PBS containing 50% glycerol, 0.5% BSA and 0.02% New type preservative N.
Purification	Affinity purification

Immunogen

Gene Name	SEMA7A CD108 SEMAL
Alternative Names	Semaphorin-7A (CDw108;JMH blood group antigen;John-Milton-Hargen human blood group Ag;Semaphorin-K1;Sema K1;Semaphorin-L;Sema L;CD antigen CD108)
Gene ID	8482.0
SwissProt ID	O75326.Synthetic peptide from human protein at AA range: 101-150

Application

Dilution Ratio	IHC 1:50-200 ELISA 1:10000-20000
Molecular Weight	

Background

This gene encodes a member of the semaphorin family of proteins. The encoded preproprotein is proteolytically processed

Product Name: CD108 Rabbit Polyclonal Antibody
Catalog #: APRab08189

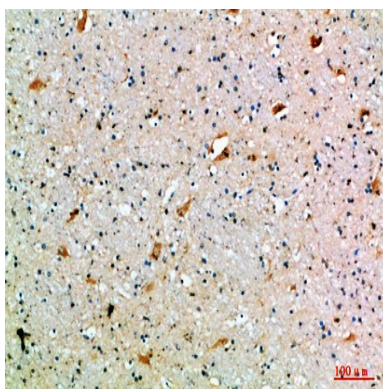


to generate the mature glycosylphosphatidylinositol (GPI)-anchored membrane glycoprotein. The encoded protein is found on activated lymphocytes and erythrocytes and may be involved in immunomodulatory and neuronal processes. The encoded protein carries the John Milton Hagen (JMH) blood group antigens. Mutations in this gene may be associated with reduced bone mineral density (BMD). Alternative splicing results in multiple transcript variants, at least one of which encodes an isoform that is proteolytically processed. [provided by RefSeq, Feb 2016],function:May play an important role in the nervous system and in modulating immune function.,online information:Blood group antigen gene mutation database,similarity:Belongs to the semaphorin family.,similarity:Contains 1 Ig-like C2-type (immunoglobulin-like) domain.,similarity:Contains 1 PSI domain.,similarity:Contains 1 Sema domain.,tissue specificity:Expressed in placenta, testis, ovary, spleen, brain, spinal cord, lung, heart, adrenal gland, lymph nodes, thymus, intestine and kidney.,

Research Area

Axon guidance;

Image Data



Immunohistochemical analysis of paraffin-embedded human-brain, antibody was diluted at 1:200

Note

For research use only.