

Product Name: CD107a Rabbit Polyclonal Antibody
Catalog #: APRab08186



Summary

Production Name	CD107a Rabbit Polyclonal Antibody
Description	Rabbit Polyclonal Antibody
Host	Rabbit
Application	WB,ELISA
Reactivity	Human,Rat,Mouse

Performance

Conjugation	Unconjugated
Modification	Unmodified
Isotype	IgG
Clonality	Polyclonal
Form	Liquid
Storage	Store at 4°C short term. Aliquot and store at -20°C long term. Avoid freeze/thaw cycles.
Buffer	Liquid in PBS containing 50% glycerol, 0.5% BSA and 0.02% New type preservative N.
Purification	Affinity purification

Immunogen

Gene Name	LAMP1
Alternative Names	LAMP1; Lysosome-associated membrane glycoprotein 1; LAMP-1; Lysosome-associated membrane protein 1; CD107 antigen-like family member A; CD107a
Gene ID	3916.0
SwissProt ID	P11279.The antiserum was produced against synthesized peptide derived from the Internal region of human LAMP1. AA range:211-260

Application

Dilution Ratio	WB 1:500 - 1:2000. ELISA: 1:20000
Molecular Weight	120kD

Product Name: CD107a Rabbit Polyclonal Antibody
Catalog #: APRab08186



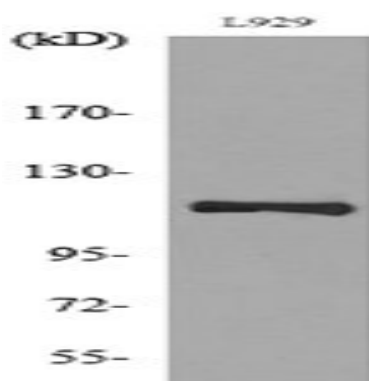
Background

The protein encoded by this gene is a member of a family of membrane glycoproteins. This glycoprotein provides selectins with carbohydrate ligands. It may also play a role in tumor cell metastasis. [provided by RefSeq, Jul 2008],function:Presents carbohydrate ligands to selectins. Also implicated in tumor cell metastasis.,PTM:O- and N-glycosylated; some of the 18 N-linked glycans are polylactosaminoglycans.,similarity:Belongs to the LAMP family.,subcellular location:This protein shuttles between lysosomes, endosomes, and the plasma membrane.,

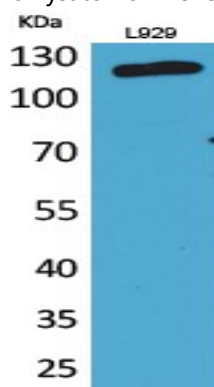
Research Area

Lysosome;

Image Data



Western blot analysis of lysate from L929 cells, using LAMP1 Antibody.



Western Blot analysis of L929 cells using CD107a Polyclonal Antibody.. Secondary antibody was diluted at 1:20000

Note

For research use only.