

Product Name: CCRL1 Rabbit Polyclonal Antibody
Catalog #: APRab08167



Summary

Production Name	CCRL1 Rabbit Polyclonal Antibody
Description	Rabbit Polyclonal Antibody
Host	Rabbit
Application	IF, WB, ELISA
Reactivity	Human, Mouse

Performance

Conjugation	Unconjugated
Modification	Unmodified
Isotype	IgG
Clonality	Polyclonal
Form	Liquid
Storage	Store at 4°C short term. Aliquot and store at -20°C long term. Avoid freeze/thaw cycles.
Buffer	Liquid in PBS containing 50% glycerol, 0.5% BSA and 0.02% New type preservative N.
Purification	Affinity purification

Immunogen

Gene Name	CCRL1
Alternative Names	CCRL1; CCBP2; CCR11; VSHK1; C-C chemokine receptor type 11; C-C CKR-11; CC-CKR-11; CCR-11; CC chemokine receptor-like 1; CCRL1; CCX CKR
Gene ID	51554.0
SwissProt ID	Q9NPB9. The antiserum was produced against synthesized peptide derived from human CCRL1. AA range: 291-340

Application

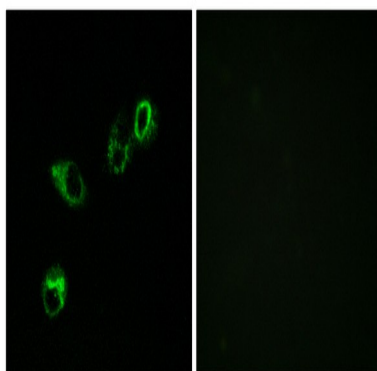
Dilution Ratio	WB 1:500 - 1:2000. IF 1:200 - 1:1000. ELISA: 1:40000. Not yet tested in other applications.
Molecular Weight	40kD

Background

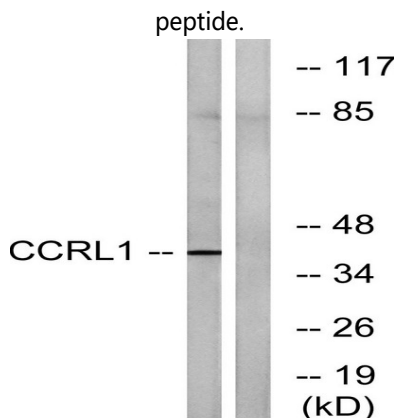
The protein encoded by this gene is a member of the G protein-coupled receptor family, and is a receptor for C-C type chemokines. This receptor has been shown to bind dendritic cell- and T cell-activated chemokines including CCL19/ELC, CCL21/SLC, and CCL25/TECK. A pseudogene of this gene is found on chromosome 6. Alternatively spliced transcript variants encoding the same protein have been described. [provided by RefSeq, Jul 2013],function:Receptor for CCL2, CCL8, CCL13, CCL19, CCL21 and CCL25.,similarity:Belongs to the G-protein coupled receptor 1 family.,tissue specificity:Predominantly expressed in heart. Lower expression in lung, pancreas, spleen, colon, skeletal muscle and small intestine.,

Research Area

Image Data

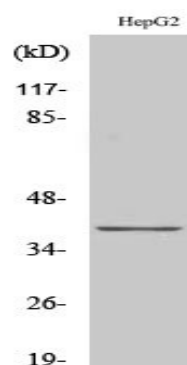


Immunofluorescence analysis of MCF7 cells, using CCRL1 Antibody. The picture on the right is blocked with the synthesized peptide.



Western blot analysis of lysates from HepG2 cells, using CCRL1 Antibody. The lane on the right is blocked with the synthesized peptide.

Product Name: CCRL1 Rabbit Polyclonal Antibody
Catalog #: APRab08167



Western Blot analysis of various cells using CCRL1 Polyclonal Antibody

Note

For research use only.