

Product Name: CCD19 Rabbit Polyclonal Antibody
Catalog #: APRab08096



Summary

Production Name	CCD19 Rabbit Polyclonal Antibody
Description	Rabbit Polyclonal Antibody
Host	Rabbit
Application	IHC,ELISA
Reactivity	Human,Rat,Mouse

Performance

Conjugation	Unconjugated
Modification	Unmodified
Isotype	IgG
Clonality	Polyclonal
Form	Liquid
Storage	Store at 4°C short term. Aliquot and store at -20°C long term. Avoid freeze/thaw cycles.
Buffer	Liquid in PBS containing 50% glycerol, 0.5% BSA and 0.02% New type preservative N.
Purification	Affinity purification

Immunogen

Gene Name	CCDC19 NESG1
Alternative Names	Coiled-coil domain-containing protein 19, mitochondrial (Nasopharyngeal epithelium-specific protein 1)
Gene ID	25790.0
SwissProt ID	Q9UL16.Synthesized peptide derived from human CCD19

Application

Dilution Ratio	IHC 1:50-200
Molecular Weight	60kD

Background

tissue specificity:Expressed in nasopharyngeal epithelium and trachea but not in esophagus, stomach, large intestine, liver,

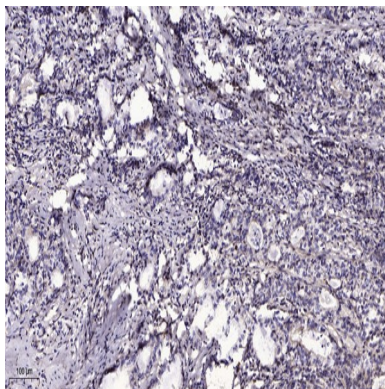
Product Name: CCD19 Rabbit Polyclonal Antibody
Catalog #: APRab08096



cerebrum, heart, bladder, kidney, thymus, or lung.,tissue specificity:Expressed in nasopharyngeal epithelium and trachea but not in esophagus, stomach, large intestine, liver, cerebrum, heart, bladder, kidney, thymus, or lung.,

Research Area

Image Data



Immunohistochemical analysis of paraffin-embedded human Gastric adenocarcinoma. 1, Antibody was diluted at 1:200 (4° overnight) . 2, Tris-EDTA,pH9.0 was used for antigen retrieval. 3,Secondary antibody was diluted at 1:200 (room temperature, 45min) .

Note

For research use only.