

Product Name: CBP80 Rabbit Polyclonal Antibody
Catalog #: APRab08043



Summary

Production Name	CBP80 Rabbit Polyclonal Antibody
Description	Rabbit Polyclonal Antibody
Host	Rabbit
Application	WB,ELISA
Reactivity	Human,Mouse,Rat

Performance

Conjugation	Unconjugated
Modification	Unmodified
Isotype	IgG
Clonality	Polyclonal
Form	Liquid
Storage	Store at 4°C short term. Aliquot and store at -20°C long term. Avoid freeze/thaw cycles.
Buffer	Liquid in PBS containing 50% glycerol, 0.5% BSA and 0.02% New type preservative N.
Purification	Affinity purification

Immunogen

Gene Name	NCBP1
Alternative Names	NCBP1; CBP80; NCBP; Nuclear cap-binding protein subunit 1; 80 kDa nuclear cap-binding protein; CBP80; NCBP 80 kDa subunit
Gene ID	4686.0
SwissProt ID	Q09161.The antiserum was produced against synthesized peptide derived from human NCBP1. AA range:1-50

Application

Dilution Ratio	WB 1:500 - 1:2000. ELISA: 1:20000
Molecular Weight	80kD

Product Name: CBP80 Rabbit Polyclonal Antibody
Catalog #: AP Rab08043



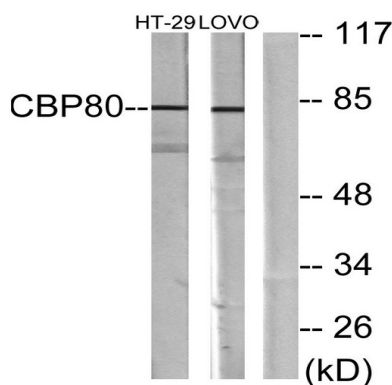
Background

The product of this gene is a component of the nuclear cap-binding protein complex (CBC), which binds to the monomethylated 5' cap of nascent pre-mRNA in the nucleoplasm. The encoded protein promotes high-affinity mRNA-cap binding and associates with the CTD of RNA polymerase II. The CBC promotes pre-mRNA splicing, 3'-end processing, RNA nuclear export, and nonsense-mediated mRNA decay. [provided by RefSeq, Jul 2008], function: Involved in mediating U snRNA export from the nucleus. Binds to 5' capped mRNA., similarity: Belongs to the NCBP1 family., similarity: Contains 1 MIF4G domain., subunit: Found in a U snRNA export complex with RNUXA/PHAX, CBP20, CBP80, RAN, XPO1 and m7G-capped RNA. Interaction with RNUXA/PHAX (By similarity). Heterodimer with NCBP2. Is part of the exon junction complex (EJC) containing NCBP1, NCBP2, RNPS1, RBM8A, SRRM1, NXF1, UPF3B, UPF2, THOC4 and/or REFBP2.,

Research Area

Spliceosome;

Image Data



Western blot analysis of lysates from HT-29 and LOVO cells, using NCBP1 Antibody. The lane on the right is blocked with the synthesized peptide.



Western Blot analysis of various cells using CBP80 Polyclonal Antibody diluted at 1: 500

Product Name: CBP80 Rabbit Polyclonal Antibody
Catalog #: APRab08043



Note

For research use only.