

Product Name: Cathepsin B Rabbit Polyclonal Antibody
Catalog #: APRab08009



Summary

Production Name	Cathepsin B Rabbit Polyclonal Antibody
Description	Rabbit Polyclonal Antibody
Host	Rabbit
Application	WB,IHC,IF,ELISA
Reactivity	Human,Mouse,Rat

Performance

Conjugation	Unconjugated
Modification	Unmodified
Isotype	IgG
Clonality	Polyclonal
Form	Liquid
Storage	Store at 4°C short term. Aliquot and store at -20°C long term. Avoid freeze/thaw cycles.
Buffer	Liquid in PBS containing 50% glycerol, 0.5% BSA and 0.02% New type preservative N.
Purification	Affinity purification

Immunogen

Gene Name	CTSB
Alternative Names	CTSB; CPSB; Cathepsin B; APP secretase; APPS; Cathepsin B1
Gene ID	1508.0
SwissProt ID	P07858.The antiserum was produced against synthesized peptide derived from human Cathepsin B. AA range:168-217

Application

Dilution Ratio	WB 1:500 - 1:2000. IHC 1:100 - 1:300. ELISA: 1:5000.. IF 1:50-200
Molecular Weight	38,40,25kD

Background

Product Name: Cathepsin B Rabbit Polyclonal Antibody
Catalog #: APRab08009

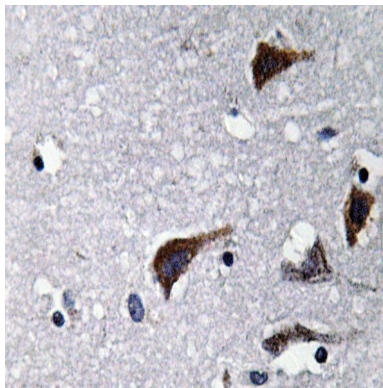


This gene encodes a member of the C1 family of peptidases. Alternative splicing of this gene results in multiple transcript variants. At least one of these variants encodes a preproprotein that is proteolytically processed to generate multiple protein products. These products include the cathepsin B light and heavy chains, which can dimerize to form the double chain form of the enzyme. This enzyme is a lysosomal cysteine protease with both endopeptidase and exopeptidase activity that may play a role in protein turnover. It is also known as amyloid precursor protein secretase and is involved in the proteolytic processing of amyloid precursor protein (APP). Incomplete proteolytic processing of APP has been suggested to be a causative factor in Alzheimer's disease, the most common cause of dementia. Overexpression of the encoded protein has been associated with esophageal adenocarcinoma and other tumors. catalytic activity:Hydrolysis of proteins with broad specificity for peptide bonds. Preferentially cleaves -Arg-Arg-|-Xaa bonds in small molecule substrates (thus differing from cathepsin L). In addition to being an endopeptidase, shows peptidyl-dipeptidase activity, liberating C-terminal dipeptides. function:Thiol protease which is believed to participate in intracellular degradation and turnover of proteins. Has also been implicated in tumor invasion and metastasis. similarity:Belongs to the peptidase C1 family. subcellular location:Identified by mass spectrometry in melanosome fractions from stage I to stage IV. subunit:Dimer of a heavy chain and a light chain cross-linked by a disulfide bond.

Research Area

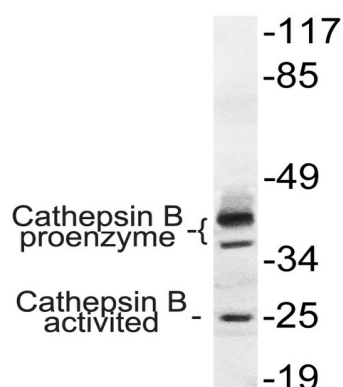
Lysosome;Antigen processing and presentation;

Image Data

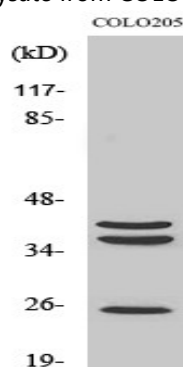


Immunohistochemistry analysis of Cathepsin B antibody in paraffin-embedded human brain tissue.

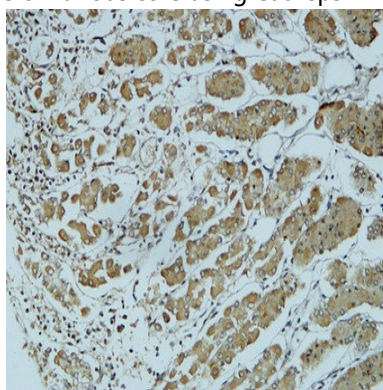
Product Name: Cathepsin B Rabbit Polyclonal Antibody
Catalog #: APRab08009



Western blot analysis of lysate from COLO cells, using Cathepsin B antibody.

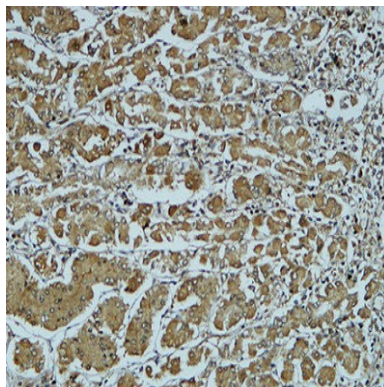


Western Blot analysis of various cells using Cathepsin B Polyclonal Antibody

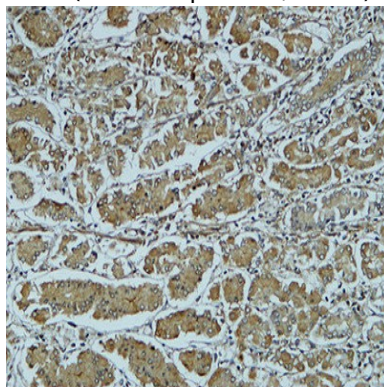


Immunohistochemical analysis of paraffin-embedded Human colon. 1, Antibody was diluted at 1:200 (4°,overnight) . 2, High-pressure and temperature EDTA, pH8.0 was used for antigen retrieval. 3,Secondary antibody was diluted at 1:200 (room temperature, 30min) .

Product Name: Cathepsin B Rabbit Polyclonal Antibody
Catalog #: APRab08009



Immunohistochemical analysis of paraffin-embedded Human colon. 1, Antibody was diluted at 1:200 (4°,overnight) . 2, High-pressure and temperature EDTA, pH8.0 was used for antigen retrieval. 3,Secondary antibody was diluted at 1:200 (room temperature, 30min) .



Immunohistochemical analysis of paraffin-embedded Human colon. 1, Antibody was diluted at 1:200 (4°,overnight) . 2, High-pressure and temperature EDTA, pH8.0 was used for antigen retrieval. 3,Secondary antibody was diluted at 1:200 (room temperature, 30min) .

Note

For research use only.