

Product Name: Caspase-6 Rabbit Polyclonal Antibody
Catalog #: APRab07978



Summary

Production Name	Caspase-6 Rabbit Polyclonal Antibody
Description	Rabbit Polyclonal Antibody
Host	Rabbit
Application	IF,IHC,WB,ELISA
Reactivity	Human,Mouse,Rat

Performance

Conjugation	Unconjugated
Modification	Unmodified
Isotype	IgG
Clonality	Polyclonal
Form	Liquid
Storage	Store at 4°C short term. Aliquot and store at -20°C long term. Avoid freeze/thaw cycles.
Buffer	Liquid in PBS containing 50% glycerol, 0.5% BSA and 0.02% New type preservative N.
Purification	Affinity purification

Immunogen

Gene Name	CASP6
Alternative Names	CASP6; MCH2; Caspase-6; CASP-6; Apoptotic protease Mch-2
Gene ID	839.0
SwissProt ID	P55212.The antiserum was produced against synthesized peptide derived from human Caspase 6. AA range:223-272

Application

Dilution Ratio	WB 1:500 - 1:2000. IHC 1:100 - 1:300. IF 1:200 - 1:1000. ELISA: 1:20000. Not yet tested in other applications.
Molecular Weight	35kD

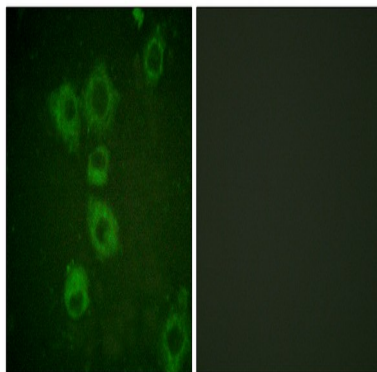
Background

This gene encodes a member of the cysteine-aspartic acid protease (caspase) family of enzymes. Sequential activation of caspases plays a central role in the execution-phase of cell apoptosis. Caspases exist as inactive proenzymes which undergo proteolytic processing at conserved aspartic acid residues to produce two subunits, large and small, that dimerize to form the active enzyme. This protein is processed by caspases 7, 8 and 10, and is thought to function as a downstream enzyme in the caspase activation cascade. Alternative splicing of this gene results in multiple transcript variants that encode different isoforms. [provided by RefSeq, Oct 2015], catalytic activity: Strict requirement for Asp at position P1 and has a preferred cleavage sequence of Val-Glu-His-Asp-|-., enzyme regulation: Activation is suppressed by phosphorylation at Ser-257., function: Involved in the activation cascade of caspases responsible for apoptosis execution. Cleaves poly(ADP-ribose) polymerase in vitro, as well as lamins. Overexpression promotes programmed cell death., PTM: Cleavages by caspase-3, caspase-8 or -10 generate the two active subunits., similarity: Belongs to the peptidase C14A family., subunit: Heterotetramer that consists of two anti-parallel arranged heterodimers, each one formed by a 18 kDa (p18) and a 11 kDa (p11) subunit.,

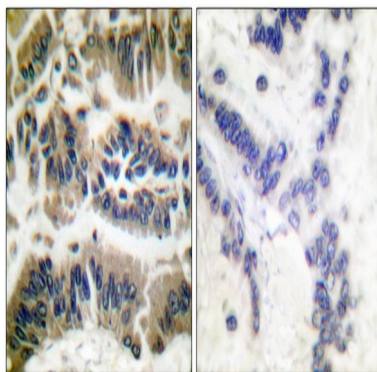
Research Area

Apoptosis_Inhibition; Apoptosis_Mitochondrial; Apoptosis_Overview;

Image Data



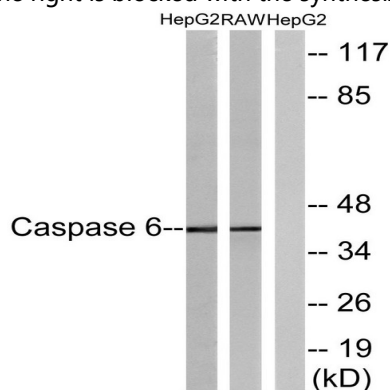
Immunofluorescence analysis of HUVEC cells, using Caspase 6 Antibody. The picture on the right is blocked with the synthesized peptide.



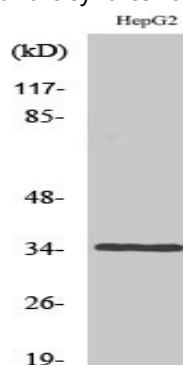
Product Name: Caspase-6 Rabbit Polyclonal Antibody
Catalog #: APRab07978



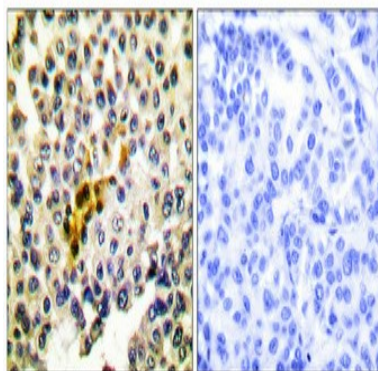
Immunohistochemistry analysis of paraffin-embedded human breast carcinoma tissue, using Caspase 6 Antibody. The picture on the right is blocked with the synthesized peptide.



Western blot analysis of lysates from HepG2 and RAW264.7 cells, using Caspase 6 Antibody. The lane on the right is blocked with the synthesized peptide.



Western Blot analysis of various cells using Caspase-6 Polyclonal Antibody diluted at 1: 1000



Immunohistochemical analysis of paraffin-embedded Human breast cancer. Antibody was diluted at 1:100 (4°, overnight) . High-pressure and temperature Tris-EDTA, pH 8.0 was used for antigen retrieval. Negative control (right) obtained from antibody was pre-absorbed by immunogen peptide.

Note

Product Name: Caspase-6 Rabbit Polyclonal Antibody
Catalog #: APRab07978



For research use only.