

**Product Name: Casein Kinase I $\alpha$  Rabbit Polyclonal Antibody**  
**Catalog #: APRab07942**

---

## Summary

<b>Production Name</b>	Casein Kinase I $\alpha$ Rabbit Polyclonal Antibody
<b>Description</b>	Rabbit Polyclonal Antibody
<b>Host</b>	Rabbit
<b>Application</b>	IF,IHC,WB,ELISA
<b>Reactivity</b>	Human,Mouse,Rat

## Performance

<b>Conjugation</b>	Unconjugated
<b>Modification</b>	Unmodified
<b>Isotype</b>	IgG
<b>Clonality</b>	Polyclonal
<b>Form</b>	Liquid
<b>Storage</b>	Store at 4°C short term. Aliquot and store at -20°C long term. Avoid freeze/thaw cycles.
<b>Buffer</b>	Liquid in PBS containing 50% glycerol, 0.5% BSA and 0.02% New type preservative N.
<b>Purification</b>	Affinity purification

## Immunogen

<b>Gene Name</b>	CSNK1A1
<b>Alternative Names</b>	CSNK1A1; Casein kinase I isoform alpha; CKI-alpha; CK1
<b>Gene ID</b>	1452.0
<b>SwissProt ID</b>	P48729.The antiserum was produced against synthesized peptide derived from human CKI-alpha. AA range:126-175

## Application

<b>Dilution Ratio</b>	WB 1:500 - 1:2000. IHC 1:100 - 1:300. IF 1:200 - 1:1000. ELISA: 1:20000. Not yet tested in other applications.
<b>Molecular Weight</b>	35kD

**Product Name: Casein Kinase I $\alpha$  Rabbit Polyclonal Antibody**  
**Catalog #: APRab07942**

---



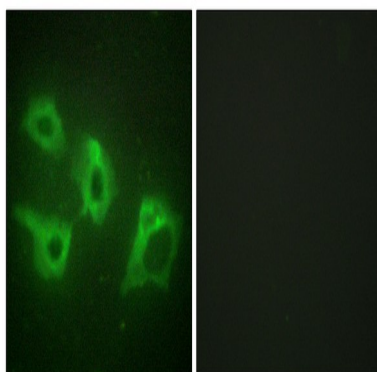
## Background

catalytic activity:ATP + a protein = ADP + a phosphoprotein.,function:Casein kinases are operationally defined by their preferential utilization of acidic proteins such as caseins as substrates. It can phosphorylate a large number of proteins. Participates in Wnt signaling. Phosphorylates CTNNB1 on 'Ser-45',,similarity:Belongs to the protein kinase superfamily.,similarity:Belongs to the protein kinase superfamily. CK1 Ser/Thr protein kinase family. Casein kinase I subfamily.,similarity:Contains 1 protein kinase domain.,subunit:Monomer. Interacts with the Axin complex.,catalytic activity:ATP + a protein = ADP + a phosphoprotein.,function:Casein kinases are operationally defined by their preferential utilization of acidic proteins such as caseins as substrates. It can phosphorylate a large number of proteins. Participates in Wnt signaling. Phosphorylates CTNNB1 on 'Ser-45',,similarity:Belongs to the protein kinase superfamily.,similarity:Belongs to the protein kinase superfamily. CK1 Ser/Thr protein kinase family. Casein kinase I subfamily.,similarity:Contains 1 protein kinase domain.,subunit:Monomer. Interacts with the Axin complex.,

## Research Area

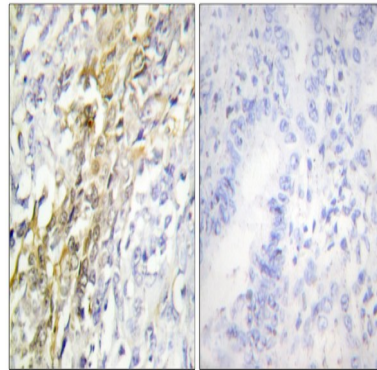
WNT;WNT-T CELLHedgehog;

## Image Data

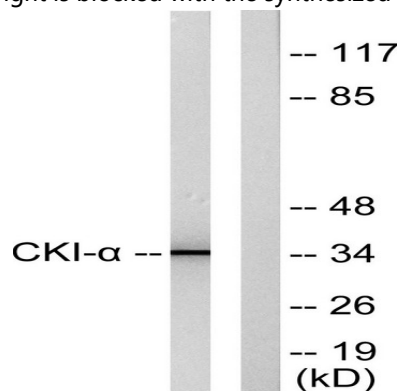


Immunofluorescence analysis of HeLa cells, using CKI- $\alpha$  Antibody. The picture on the right is blocked with the synthesized peptide.

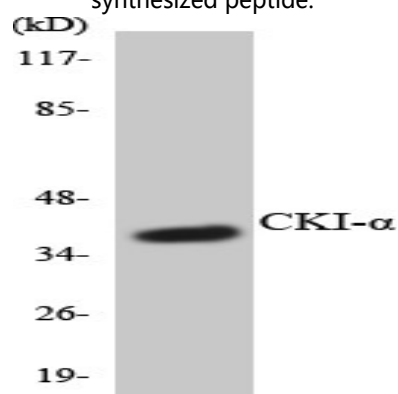
**Product Name: Casein Kinase I $\alpha$  Rabbit Polyclonal Antibody**  
**Catalog #: APRab07942**



Immunohistochemistry analysis of paraffin-embedded human lung carcinoma tissue, using CKI- $\alpha$  Antibody. The picture on the right is blocked with the synthesized peptide.



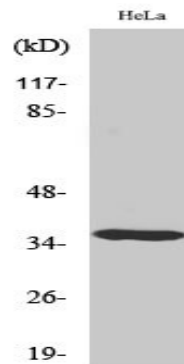
Western blot analysis of lysates from HeLa cells, using CKI- $\alpha$  Antibody. The lane on the right is blocked with the synthesized peptide.



Western blot analysis of the lysates from HT-29 cells using CKI- $\alpha$  antibody.

**Product Name: Casein Kinase I $\alpha$  Rabbit Polyclonal Antibody**  
**Catalog #: APRab07942**

---



Western Blot analysis of various cells using Casein Kinase I $\alpha$  Polyclonal Antibody

### **Note**

For research use only.