

**Product Name: Cardiotrophin-1 Rabbit Polyclonal Antibody**  
**Catalog #: APRab07928**

---

## Summary

<b>Production Name</b>	Cardiotrophin-1 Rabbit Polyclonal Antibody
<b>Description</b>	Rabbit Polyclonal Antibody
<b>Host</b>	Rabbit
<b>Application</b>	IHC,WB,ELISA
<b>Reactivity</b>	Human,Mouse,Rat

## Performance

<b>Conjugation</b>	Unconjugated
<b>Modification</b>	Unmodified
<b>Isotype</b>	IgG
<b>Clonality</b>	Polyclonal
<b>Form</b>	Liquid
<b>Storage</b>	Store at 4°C short term. Aliquot and store at -20°C long term. Avoid freeze/thaw cycles.
<b>Buffer</b>	Liquid in PBS containing 50% glycerol, 0.5% BSA and 0.02% New type preservative N.
<b>Purification</b>	Affinity purification

## Immunogen

<b>Gene Name</b>	CTF1
<b>Alternative Names</b>	CTF1; Cardiotrophin-1; CT-1
<b>Gene ID</b>	1489.0
<b>SwissProt ID</b>	Q16619.The antiserum was produced against synthesized peptide derived from human Cardiotrophin-1. AA range:31-80

## Application

<b>Dilution Ratio</b>	WB 1:500 - 1:2000. IHC 1:100 - 1:300. ELISA: 1:40000..
<b>Molecular Weight</b>	21kD

**Product Name: Cardiotrophin-1 Rabbit Polyclonal Antibody**  
**Catalog #: APRab07928**



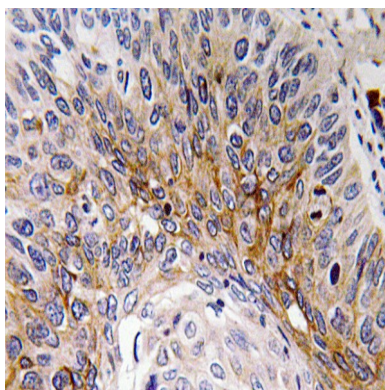
## Background

The protein encoded by this gene is a secreted cytokine that induces cardiac myocyte hypertrophy in vitro. It has been shown to bind and activate the ILST/gp130 receptor. Two transcript variants encoding different isoforms have been found for this gene. [provided by RefSeq, Dec 2008],function:Induces cardiac myocyte hypertrophy in vitro. Binds to and activates the ILST/gp130 receptor.,similarity:Belongs to the IL-6 superfamily.,tissue specificity:Highly expressed in heart, skeletal muscle, prostate and ovary. Lower levels in lung, kidney, pancreas, thymus, testis and small intestine. Little or no expression in brain, placenta, liver, spleen, colon or peripheral blood leukocytes.,

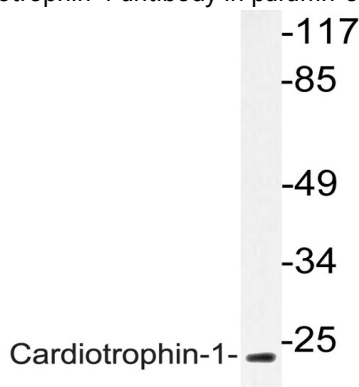
## Research Area

Cytokine-cytokine receptor interaction;Jak\_STAT;

## Image Data



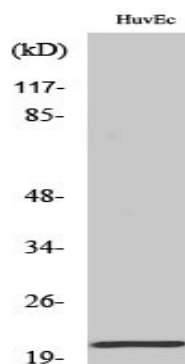
Immunohistochemistry analysis of Cardiotrophin-1 antibody in paraffin-embedded human lung carcinoma tissue.



Western blot analysis of lysate from HUVEC cells, using Cardiotrophin-1 antibody.

**Product Name: Cardiotrophin-1 Rabbit Polyclonal Antibody**  
**Catalog #: APRab07928**

---



Western Blot analysis of various cells using Cardiotrophin-1 Polyclonal Antibody

**Note**

For research use only.