

Summary

Production Name	CaMKII δ Rabbit Polyclonal Antibody
Description	Rabbit Polyclonal Antibody
Host	Rabbit
Application	WB,IHC,ELISA
Reactivity	Human,Mouse,Rat

Performance

Conjugation	Unconjugated
Modification	Unmodified
Isotype	IgG
Clonality	Polyclonal
Form	Liquid
Storage	Store at 4°C short term. Aliquot and store at -20°C long term. Avoid freeze/thaw cycles.
Buffer	Liquid in PBS containing 50% glycerol, 0.5% BSA and 0.02% New type preservative N.
Purification	Affinity purification

Immunogen

Gene Name	CAMK2D
Alternative Names	CAMK2D; CAMKD; Calcium/calmodulin-dependent protein kinase type II subunit delta; CaM kinase II subunit delta; CaMK-II subunit delta
Gene ID	817.0
SwissProt ID	Q13557.Synthesized peptide derived from the Internal region of human CaMKII δ .

Application

Dilution Ratio	WB 1:500 - 1:2000. IHC-p: 1:100-300 ELISA: 1:40000..
Molecular Weight	56kD

Background

Product Name: CaMKII δ Rabbit Polyclonal Antibody
Catalog #: APRab07890

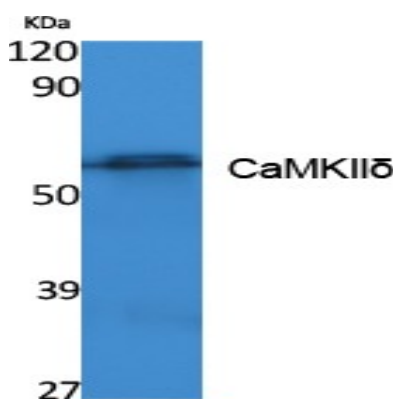


The product of this gene belongs to the serine/threonine protein kinase family and to the Ca(2+)/calmodulin-dependent protein kinase subfamily. Calcium signaling is crucial for several aspects of plasticity at glutamatergic synapses. In mammalian cells, the enzyme is composed of four different chains: alpha, beta, gamma, and delta. The product of this gene is a delta chain. Alternative splicing results in multiple transcript variants encoding distinct isoforms. Distinct isoforms of this chain have different expression patterns.[provided by RefSeq, Nov 2008],catalytic activity:ATP + a protein = ADP + a phosphoprotein.,enzyme regulation:Autophosphorylation of CAMK2 plays an important role in the regulation of the kinase activity.,function:CaM-kinase II (CAMK2) is a prominent kinase in the central nervous system that may function in long-term potentiation and neurotransmitter release.,miscellaneous:Expression of CAMK2D is significantly increased in patients suffering from dilated cardiomyopathy.,similarity:Belongs to the protein kinase superfamily.,similarity:Belongs to the protein kinase superfamily. CAMK Ser/Thr protein kinase family. CaMK subfamily.,similarity:Contains 1 protein kinase domain.,subunit:CAMK2 is composed of four different chains: alpha, beta, gamma, and delta. The different isoforms assemble into homo- or heteromultimeric holoenzymes composed of 8 to 12 subunits.,tissue specificity:Expressed in cardiac muscle and skeletal muscle. Isoform Delta 3, isoform Delta 2, isoform Delta 8 and isoform Delta 9 are expressed in cardiac muscle. Isoform Delta 11 is expressed in skeletal muscle.,

Research Area

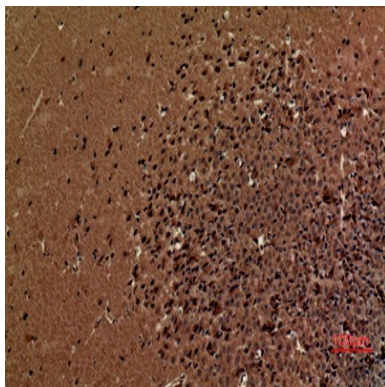
ErbB_HER;Calcium;Oocyte meiosis;WNT;WNT-T CELLLong-term potentiation;Neurotrophin;Olfactory transduction;GnRH;Melanogenesis;Glioma;

Image Data

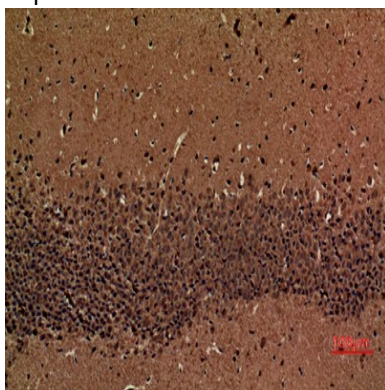


Western Blot analysis of extracts from K562 cells, using CaMKII δ Polyclonal Antibody.. Secondary antibody was diluted at 1:20000

Product Name: CaMKII δ Rabbit Polyclonal Antibody
Catalog #: APRab07890



Immunohistochemical analysis of paraffin-embedded mouse-brain, antibody was diluted at 1:100



Immunohistochemical analysis of paraffin-embedded mouse-brain, antibody was diluted at 1:100

Note

For research use only.