

**Product Name: Calgizzarin Rabbit Polyclonal Antibody**  
**Catalog #: APRab07856**



## Summary

<b>Production Name</b>	Calgizzarin Rabbit Polyclonal Antibody
<b>Description</b>	Rabbit Polyclonal Antibody
<b>Host</b>	Rabbit
<b>Application</b>	IHC,ELISA
<b>Reactivity</b>	Human,Mouse,Rat

## Performance

<b>Conjugation</b>	Unconjugated
<b>Modification</b>	Unmodified
<b>Isotype</b>	IgG
<b>Clonality</b>	Polyclonal
<b>Form</b>	Liquid
<b>Storage</b>	Store at 4°C short term. Aliquot and store at -20°C long term. Avoid freeze/thaw cycles.
<b>Buffer</b>	Liquid in PBS containing 50% glycerol, 0.5% BSA and 0.02% New type preservative N.
<b>Purification</b>	Affinity purification

## Immunogen

<b>Gene Name</b>	S100A11
<b>Alternative Names</b>	S100A11; MLN70; S100C; Protein S100-A11; Calgizzarin; Metastatic lymph node gene 70 protein; MLN 70; Protein S100-C; S100 calcium-binding protein A11
<b>Gene ID</b>	6282.0
<b>SwissProt ID</b>	P31949.Synthesized peptide derived from Calgizzarin . at AA range: 30-110

## Application

<b>Dilution Ratio</b>	IHC 1:100-1:300 ELISA: 1:10000
<b>Molecular Weight</b>	

## Background

The protein encoded by this gene is a member of the S100 family of proteins containing 2 EF-hand calcium-binding motifs.

**Product Name: Calgizzarin Rabbit Polyclonal Antibody**  
**Catalog #: APRab07856**

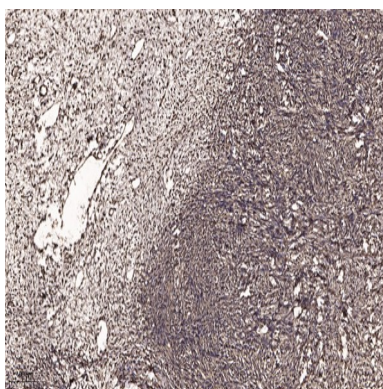
---



S100 proteins are localized in the cytoplasm and/or nucleus of a wide range of cells, and involved in the regulation of a number of cellular processes such as cell cycle progression and differentiation. S100 genes include at least 13 members which are located as a cluster on chromosome 1q21. This protein may function in motility, invasion, and tubulin polymerization. Chromosomal rearrangements and altered expression of this gene have been implicated in tumor metastasis. [provided by RefSeq, Jul 2008],function:Facilitates the differentiation and the cornification of keratinocytes.,miscellaneous:Binds two calcium ions per molecule with an affinity similar to that of the S-100 proteins.,PTM:Phosphorylation at Thr-10 by PRKCA significantly suppresses homodimerization and promotes association with NCL/nucleolin which induces nuclear translocation.,similarity:Belongs to the S-100 family.,similarity:Contains 2 EF-hand domains.,subunit:Homodimer; disulfide-linked.,

## Research Area

## Image Data



Immunohistochemical analysis of paraffin-embedded human oophoroma. 1, Antibody was diluted at 1:200 (4° overnight) .  
2, Tris-EDTA,pH9.0 was used for antigen retrieval. 3,Secondary antibody was diluted at 1:200 (room temperature, 45min) .

## Note

For research use only.