

**Product Name: Cadherin-22 Rabbit Polyclonal Antibody**  
**Catalog #: APRab07831**



## Summary

|                        |  |
|------------------------|--|
| <b>Production Name</b> | Cadherin-22 Rabbit Polyclonal Antibody |
| <b>Description</b>     | Rabbit Polyclonal Antibody             |
| <b>Host</b>            | Rabbit                                 |
| <b>Application</b>     | IF,IHC,WB,ELISA                        |
| <b>Reactivity</b>      | Human,Mouse,Rat                        |

## Performance

|                     |  |
|---------------------|--|
| <b>Conjugation</b>  | Unconjugated   |
| <b>Modification</b> | Unmodified   |
| <b>Isotype</b>      | IgG  |
| <b>Clonality</b>    | Polyclonal   |
| <b>Form</b>         | Liquid   |
| <b>Storage</b>      | Store at 4°C short term. Aliquot and store at -20°C long term. Avoid freeze/thaw cycles. |
| <b>Buffer</b>       | Liquid in PBS containing 50% glycerol, 0.5% BSA and 0.02% New type preservative N.       |
| <b>Purification</b> | Affinity purification  |

## Immunogen

|                          |  |
|--------------------------|--|
| <b>Gene Name</b>         | CDH22  |
| <b>Alternative Names</b> | CDH22; C20orf25; Cadherin-22; Pituitary and brain cadherin; PB-cadherin                                  |
| <b>Gene ID</b>           | 64405.0  |
| <b>SwissProt ID</b>      | Q9UJ99.The antiserum was produced against synthesized peptide derived from human CDH22. AA range:111-160 |

## Application

|                         |  |
|-------------------------|--|
| <b>Dilution Ratio</b>   | WB 1:500 - 1:2000. IHC 1:100 - 1:300. IF 1:200 - 1:1000. ELISA: 1:10000. Not yet tested in other applications. |
| <b>Molecular Weight</b> | 84kD   |

**Product Name: Cadherin-22 Rabbit Polyclonal Antibody**  
**Catalog #: APRab07831**



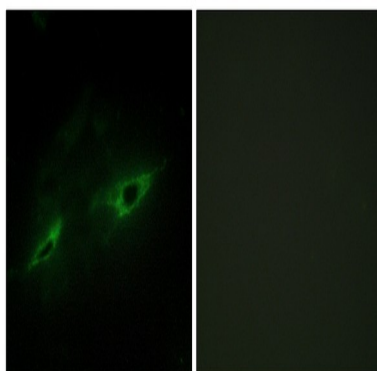
## Background

This gene is a member of the cadherin superfamily. The gene product is composed of five cadherin repeat domains and a cytoplasmic tail similar to the highly conserved cytoplasmic region of classical cadherins. Expressed predominantly in the brain, this putative calcium-dependent cell adhesion protein may play an important role in morphogenesis and tissue formation in neural and non-neural cells during development and maintenance of the brain and neuroendocrine organs. [provided by RefSeq, Jul 2008],function:Cadherins are calcium dependent cell adhesion proteins. They preferentially interact with themselves in a homophilic manner in connecting cells; cadherins may thus contribute to the sorting of heterogeneous cell types. PB-cadherins may have a role in the morphological organization of pituitary gland and brain tissues.,similarity:Contains 5 cadherin domains.,

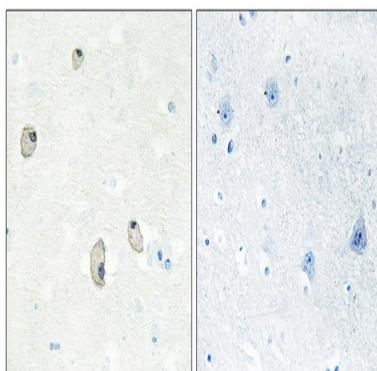
## Research Area

Adherens\_Junction

## Image Data

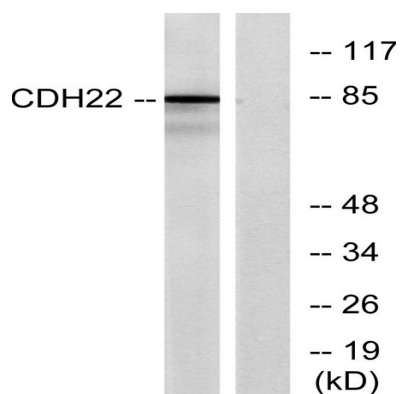


Immunofluorescence analysis of NIH/3T3 cells, using CDH22 Antibody. The picture on the right is blocked with the synthesized peptide.



Immunohistochemistry analysis of paraffin-embedded human brain tissue, using CDH22 Antibody. The picture on the right is blocked with the synthesized peptide.

**Product Name: Cadherin-22 Rabbit Polyclonal Antibody**  
**Catalog #: APRab07831**



Western blot analysis of lysates from rat brain cells, using CDH22 Antibody. The lane on the right is blocked with the synthesized peptide.

**Note**

For research use only.