

Product Name: CacyBP Rabbit Polyclonal Antibody
Catalog #: APRab07821



Summary

Production Name	CacyBP Rabbit Polyclonal Antibody
Description	Rabbit Polyclonal Antibody
Host	Rabbit
Application	WB,IHC,IF,ELISA
Reactivity	Human,Mouse,Rat

Performance

Conjugation	Unconjugated
Modification	Unmodified
Isotype	IgG
Clonality	Polyclonal
Form	Liquid
Storage	Store at 4°C short term. Aliquot and store at -20°C long term. Avoid freeze/thaw cycles.
Buffer	Liquid in PBS containing 50% glycerol, 0.5% BSA and 0.02% New type preservative N.
Purification	Affinity purification

Immunogen

Gene Name	CACYBP
Alternative Names	CACYBP; S100A6BP; SIP; PNAS-107; Calcyclin-binding protein; CacyBP; hCacyBP; S100A6-binding protein; Siah-interacting protein
Gene ID	27101.0
SwissProt ID	Q9HB71.The antiserum was produced against synthesized peptide derived from the C-terminal region of human CACYBP. AA range:171-220

Application

Dilution Ratio	WB 1:500 - 1:2000. IHC-p: 1:100-1:300. ELISA: 1:20000.. IF 1:50-200
Molecular Weight	25kD

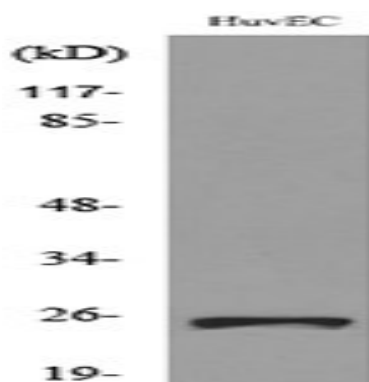
Background

The protein encoded by this gene is a calyculin binding protein. It may be involved in calcium-dependent ubiquitination and subsequent proteosomal degradation of target proteins. It probably serves as a molecular bridge in ubiquitin E3 complexes and participates in the ubiquitin-mediated degradation of beta-catenin. Two alternatively spliced transcript variants encoding different isoforms have been found for this gene. [provided by RefSeq, Jul 2008],function:May be involved in calcium-dependent ubiquitination and subsequent proteosomal degradation of target proteins. Probably serves as a molecular bridge in ubiquitin E3 complexes. Participates in the ubiquitin-mediated degradation of beta-catenin (CTNNB1),,PTM:Phosphorylated on serine residues. Phosphorylated upon induction by RA or at high calcium concentrations.,similarity:Contains 1 CS domain.,similarity:Contains 1 SGS domain.,subcellular location:Cytoplasmic at low calcium concentrations. In neuroblastoma cells, after a retinoic acid (RA) induction and calcium increase, it localizes in both the nucleus and cytoplasm. The nuclear fraction may be phosphorylated.,subunit:Interacts with protein of the S100 family S100A1, S100A6, S100B, S100P and S100A12 at physiological calcium concentrations (By similarity). Component of some large E3 complex at least composed of UBE2D1, SIAH1, CACYBP/SIP, SKP1, APC and TBL1X. Interacts directly with SIAH1, SIAH2 and SKP1.,

Research Area

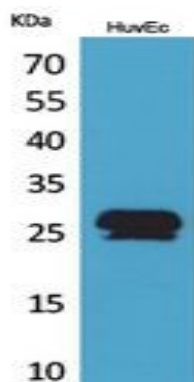
WNT;WNT-T CELL

Image Data

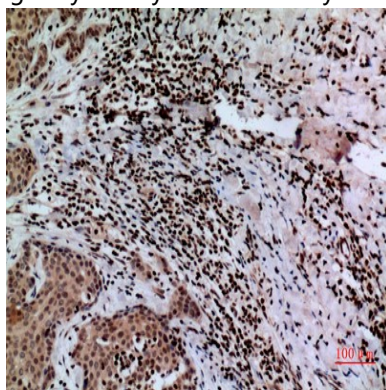


Western blot analysis of lysate from HUVEC cells, using CACYBP Antibody.

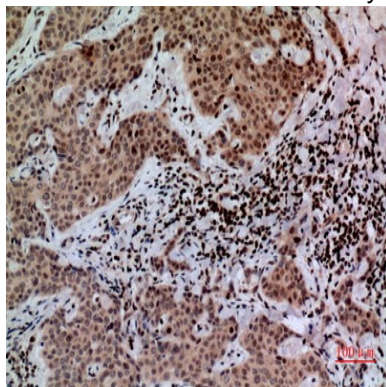
Product Name: CacyBP Rabbit Polyclonal Antibody
Catalog #: APRab07821



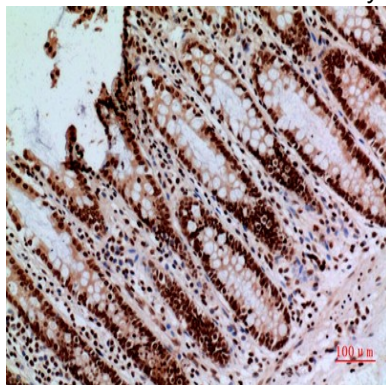
Western Blot analysis of HuvEc cells using CacyBP Polyclonal Antibody.. Secondary antibody was diluted at 1:20000



Immunohistochemical analysis of paraffin-embedded human-mammary-cancer, antibody was diluted at 1:100



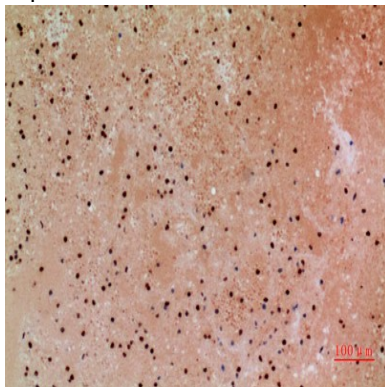
Immunohistochemical analysis of paraffin-embedded human-mammary-cancer, antibody was diluted at 1:100



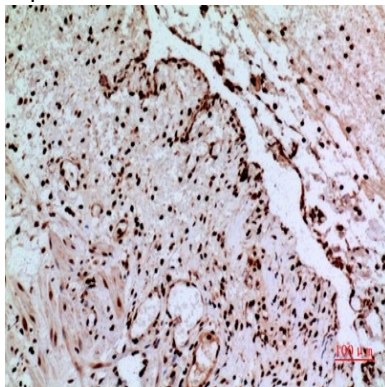
Product Name: CacyBP Rabbit Polyclonal Antibody
Catalog #: APRab07821



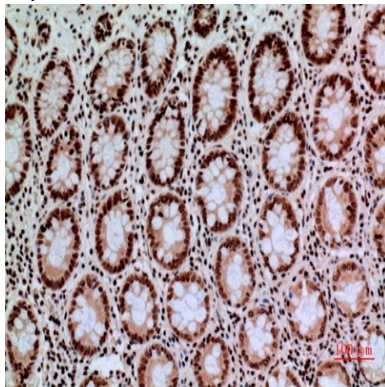
Immunohistochemical analysis of paraffin-embedded human-colon, antibody was diluted at 1:100



Immunohistochemical analysis of paraffin-embedded human-colon, antibody was diluted at 1:100



Immunohistochemical analysis of paraffin-embedded human-colon, antibody was diluted at 1:100



Immunohistochemical analysis of paraffin-embedded human-colon, antibody was diluted at 1:100

Note

For research use only.