

Product Name: C/EBP δ/ϵ Rabbit Polyclonal Antibody
Catalog #: APRab07708



Summary

Production Name	C/EBP δ/ϵ Rabbit Polyclonal Antibody
Description	Rabbit Polyclonal Antibody
Host	Rabbit
Application	WB,ELISA
Reactivity	Human,Mouse,Rat

Performance

Conjugation	Unconjugated
Modification	Unmodified
Isotype	IgG
Clonality	Polyclonal
Form	Liquid
Storage	Store at 4°C short term. Aliquot and store at -20°C long term. Avoid freeze/thaw cycles.
Buffer	Liquid in PBS containing 50% glycerol, 0.5% BSA and 0.02% New type preservative N.
Purification	Affinity purification

Immunogen

Gene Name	CEBPD/CEBPE
Alternative Names	CEBPD; CCAAT/enhancer-binding protein delta; C/EBP delta; Nuclear factor NF-IL6-beta; NF-IL6-beta; CEBPE; CCAAT/enhancer-binding protein epsilon; C/EBP epsilon
Gene ID	1052/1053
SwissProt ID	P49716/Q15744.The antiserum was produced against synthesized peptide derived from human CEBPD/E. AA range:171-220

Application

Dilution Ratio	WB 1:500 - 1:2000. ELISA: 1:20000. Not yet tested in other applications.
Molecular Weight	28kD

Product Name: C/EBP δ/ϵ Rabbit Polyclonal Antibody
Catalog #: APRab07708

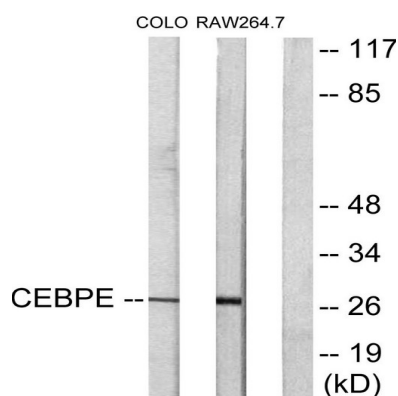


Background

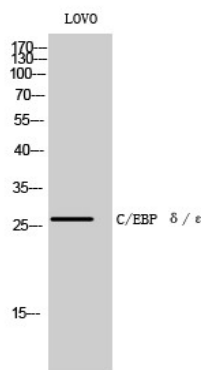
The protein encoded by this intronless gene is a bZIP transcription factor which can bind as a homodimer to certain DNA regulatory regions. It can also form heterodimers with the related protein CEBP-alpha. The encoded protein is important in the regulation of genes involved in immune and inflammatory responses, and may be involved in the regulation of genes associated with activation and/or differentiation of macrophages. The cytogenetic location of this locus has been reported as both 8p11 and 8q11. [provided by RefSeq, Sep 2010],function:C/EBP is a DNA-binding protein that recognizes two different motifs: the CCAAT homology common to many promoters and the enhanced core homology common to many enhancers. Important transcriptional activator in the regulation of genes involved in immune and inflammatory responses, may play an important role in the regulation of the several genes associated with activation and/or differentiation of macrophages.,similarity:Belongs to the bZIP family. C/EBP subfamily.,similarity:Contains 1 bZIP domain.,subunit:Binds DNA as a dimer and can form stable heterodimers with C/EBP alpha. Interacts with SPI1/PU.1.,

Research Area

Image Data



Western blot analysis of lysates from LOVO and RAW264.7 cells, using CEBPD/E Antibody. The lane on the right is blocked with the synthesized peptide.

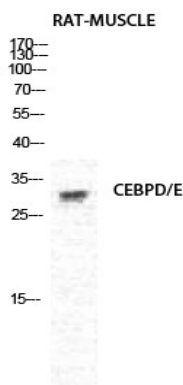


Western Blot analysis of LOVO cells using C/EBP δ/ϵ Polyclonal Antibody diluted at 1: 500 cells nucleus extracted by Minute

Product Name: C/EBP δ/ϵ Rabbit Polyclonal Antibody
Catalog #: APRab07708



TM Cytoplasmic and Nuclear Fractionation kit (SC-003, Invent biotech, MN, USA) .



Western Blot analysis of RAT-MUSCLE cells using C/EBP δ/ϵ Polyclonal Antibody diluted at 1 : 500 cells nucleus extracted by Minute TM Cytoplasmic and Nuclear Fractionation kit (SC-003, Invent biotech, MN, USA) .

Note

For research use only.