

Summary

Production Name	Bub3 Rabbit Polyclonal Antibody
Description	Rabbit Polyclonal Antibody
Host	Rabbit
Application	WB,ELISA
Reactivity	Human,Mouse,Rat

Performance

Conjugation	Unconjugated
Modification	Unmodified
Isotype	IgG
Clonality	Polyclonal
Form	Liquid
Storage	Store at 4°C short term. Aliquot and store at -20°C long term. Avoid freeze/thaw cycles.
Buffer	Liquid in PBS containing 50% glycerol, 0.5% BSA and 0.02% New type preservative N.
Purification	Affinity purification

Immunogen

Gene Name	BUB3
Alternative Names	BUB3; Mitotic checkpoint protein BUB3
Gene ID	9184.0
SwissProt ID	O43684.The antiserum was produced against synthesized peptide derived from human BUB3. AA range:279-328

Application

Dilution Ratio	WB 1:500 - 1:2000. ELISA: 1:5000. Not yet tested in other applications.
Molecular Weight	40kD

Background

Product Name: Bub3 Rabbit Polyclonal Antibody
Catalog #: AP Rab07695

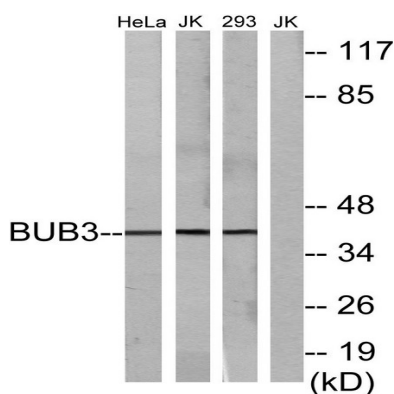


This gene encodes a protein involved in spindle checkpoint function. The encoded protein contains four WD repeat domains and has sequence similarity with the yeast BUB3 protein. Alternate transcriptional splice variants, encoding different isoforms, have been characterized. [provided by RefSeq, Jul 2008],function:Required for kinetochore localization of BUB1.,similarity:Belongs to the WD repeat BUB3 family.,similarity:Contains 5 WD repeats.,subunit:Interacts with BUB1 and BUBR1.,

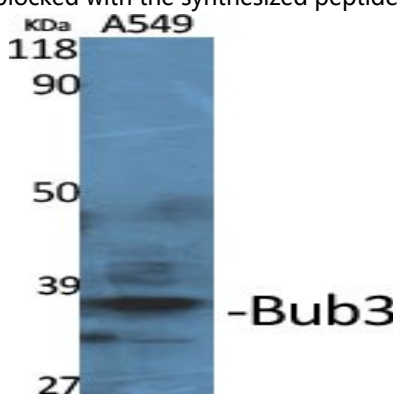
Research Area

Cell_Cycle_G1S;Cell_Cycle_G2M_DNA;

Image Data

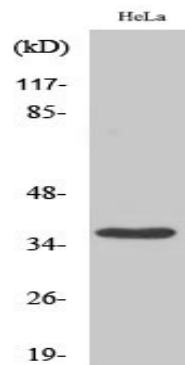


Western blot analysis of lysates from HeLa cells, Jurkat cells, and 293 cells, using BUB3 Antibody. The lane on the right is blocked with the synthesized peptide.



Western Blot analysis of various cells using Bub3 Polyclonal Antibody

Product Name: Bub3 Rabbit Polyclonal Antibody
Catalog #: APRab07695



Western Blot analysis of 293 cells using Bub3 Polyclonal Antibody

Note

For research use only.