

Product Name: BTF3L4 Rabbit Polyclonal Antibody
Catalog #: APRab07687



Summary

Production Name	BTF3L4 Rabbit Polyclonal Antibody
Description	Rabbit Polyclonal Antibody
Host	Rabbit
Application	IHC,ELISA
Reactivity	Human,Mouse

Performance

Conjugation	Unconjugated
Modification	Unmodified
Isotype	IgG
Clonality	Polyclonal
Form	Liquid
Storage	Store at 4°C short term. Aliquot and store at -20°C long term. Avoid freeze/thaw cycles.
Buffer	Liquid in PBS containing 50% glycerol, 0.5% BSA and 0.02% New type preservative N.
Purification	Affinity purification

Immunogen

Gene Name	BTF3L4
Alternative Names	BTF3L4; Transcription factor BTF3 homolog 4; Basic transcription factor 3-like 4
Gene ID	91408.0
SwissProt ID	Q96K17.The antiserum was produced against synthesized peptide derived from human BTF3L4. AA range:94-143

Application

Dilution Ratio	IHC 1:100-1:300 ELISA: 1:40000
Molecular Weight	17kD

Background

similarity:Belongs to the NAC-beta family.,similarity:Contains 1 NAC-A/B (NAC-alpha/beta) domain.,similarity:Belongs to

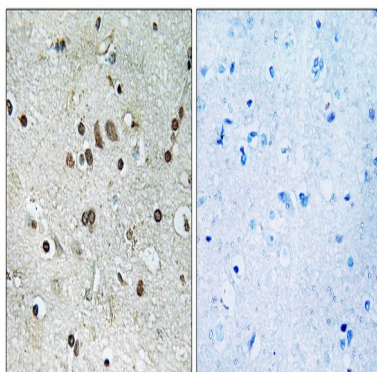
Product Name: BTF3L4 Rabbit Polyclonal Antibody
Catalog #: APRab07687



the NAC-beta family.,similarity:Contains 1 NAC-A/B (NAC-alpha/beta) domain.,

Research Area

Image Data



Immunohistochemistry analysis of paraffin-embedded human brain tissue, using BTF3L4 Antibody. The picture on the right is blocked with the synthesized peptide.

Note

For research use only.