

**Product Name: BST-1 Rabbit Polyclonal Antibody**  
**Catalog #: APRab07674**



## Summary

<b>Production Name</b>	BST-1 Rabbit Polyclonal Antibody
<b>Description</b>	Rabbit Polyclonal Antibody
<b>Host</b>	Rabbit
<b>Application</b>	WB,ELISA
<b>Reactivity</b>	Human,Mouse,Rat,Monkey

## Performance

<b>Conjugation</b>	Unconjugated
<b>Modification</b>	Unmodified
<b>Isotype</b>	IgG
<b>Clonality</b>	Polyclonal
<b>Form</b>	Liquid
<b>Storage</b>	Store at 4°C short term. Aliquot and store at -20°C long term. Avoid freeze/thaw cycles.
<b>Buffer</b>	Liquid in PBS containing 50% glycerol, 0.5% BSA and 0.02% New type preservative N.
<b>Purification</b>	Affinity purification

## Immunogen

<b>Gene Name</b>	BST1
<b>Alternative Names</b>	BST1; ADP-ribosyl cyclase 2; Bone marrow stromal antigen 1; BST-1; Cyclic ADP-ribose hydrolase 2; cADPr hydrolase 2; CD antigen CD157
<b>Gene ID</b>	683.0
<b>SwissProt ID</b>	Q10588.The antiserum was produced against synthesized peptide derived from human BST1. AA range:71-120

## Application

<b>Dilution Ratio</b>	WB 1:500 - 1:2000. ELISA: 1:40000.
<b>Molecular Weight</b>	34kD

**Product Name: BST-1 Rabbit Polyclonal Antibody**  
**Catalog #: APRab07674**



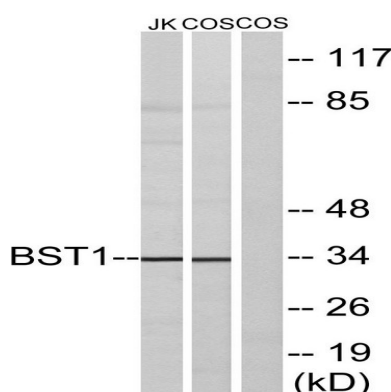
## Background

Bone marrow stromal cell antigen-1 is a stromal cell line-derived glycosylphosphatidylinositol-anchored molecule that facilitates pre-B-cell growth. The deduced amino acid sequence exhibits 33% similarity with CD38. BST1 expression is enhanced in bone marrow stromal cell lines derived from patients with rheumatoid arthritis. The polyclonal B-cell abnormalities in rheumatoid arthritis may be, at least in part, attributed to BST1 overexpression in the stromal cell population. [provided by RefSeq, Jul 2008],catalytic activity:NAD(+) + H(2)O = ADP-ribose + nicotinamide.,disease:Rheumatoid arthritis (RA) patients show enhanced expression of BST-1 transcripts in bone marrow stromal cell lines. This suggests that BST-1 overexpression may play a role in B-cell abnormalities in RA.,function:Synthesizes cyclic ADP-ribose, a second messenger that elicits calcium release from intracellular stores. May be involved in pre-B-cell growth.,similarity:Belongs to the ADP-ribosyl cyclase family.,subunit:Homodimer.,tissue specificity:Widely expressed.,

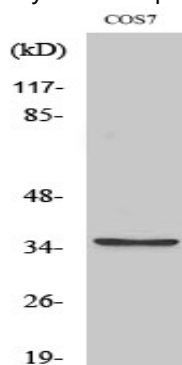
## Research Area

Nicotinate and nicotinamide metabolism;Calcium;

## Image Data



Western blot analysis of lysates from COS7 and Jurkat cells, using BST1 Antibody. The lane on the right is blocked with the synthesized peptide.



Western Blot analysis of various cells using BST-1 Polyclonal Antibody

**Product Name: BST-1 Rabbit Polyclonal Antibody**  
**Catalog #: APRab07674**

---



**Note**

For research use only.