

Product Name: BRMS-1 Rabbit Polyclonal Antibody
Catalog #: APRab07660



Summary

Production Name	BRMS-1 Rabbit Polyclonal Antibody
Description	Rabbit Polyclonal Antibody
Host	Rabbit
Application	WB,ELISA
Reactivity	Human,Mouse,Rat

Performance

Conjugation	Unconjugated
Modification	Unmodified
Isotype	IgG
Clonality	Polyclonal
Form	Liquid
Storage	Store at 4°C short term. Aliquot and store at -20°C long term. Avoid freeze/thaw cycles.
Buffer	Liquid in PBS containing 50% glycerol, 0.5% BSA and 0.02% New type preservative N.
Purification	Affinity purification

Immunogen

Gene Name	BRMS1
Alternative Names	BRMS1; Breast cancer metastasis-suppressor 1
Gene ID	25855.0
SwissProt ID	Q9HCU9.The antiserum was produced against synthesized peptide derived from the C-terminal region of human BRMS1. AA range:197-246

Application

Dilution Ratio	WB 1:500 - 1:2000. ELISA: 1:20000
Molecular Weight	28kD

Background

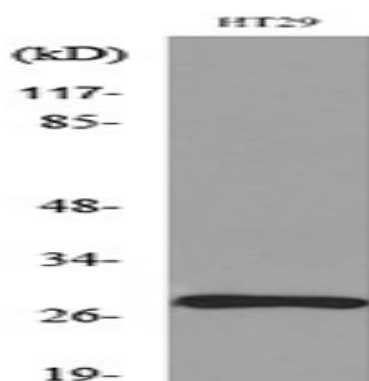
Product Name: BRMS-1 Rabbit Polyclonal Antibody
Catalog #: APRab07660



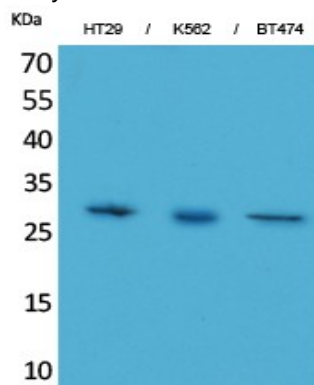
This gene reduces the metastatic potential, but not the tumorigenicity, of human breast cancer and melanoma cell lines. The protein encoded by this gene localizes primarily to the nucleus and is a component of the mSin3a family of histone deacetylase complexes (HDAC). The protein contains two coiled-coil motifs and several imperfect leucine zipper motifs. Alternative splicing results in two transcript variants encoding different isoforms. [provided by RefSeq, Jul 2008],function:May be a mediator of metastasis suppression in breast carcinoma.,similarity:Belongs to the BRMS1 family.,tissue specificity:Expression levels are higher in term placentas than in early placentas. Low levels of expression observed in normal pregnancies and in molar pregnancies.,

Research Area

Image Data



Western blot analysis of lysate from HT29 cells, using BRMS1 Antibody.



Western Blot analysis of HT29, K562, BT474 cells using BRMS-1 Polyclonal Antibody.. Secondary antibody was diluted at 1:20000

Note

For research use only.