

Product Name: BMP-9 Rabbit Polyclonal Antibody
Catalog #: APRab07606



Summary

Production Name	BMP-9 Rabbit Polyclonal Antibody
Description	Rabbit Polyclonal Antibody
Host	Rabbit
Application	IHC,
Reactivity	Human,Mouse

Performance

Conjugation	Unconjugated
Modification	Unmodified
Isotype	IgG
Clonality	Polyclonal
Form	Liquid
Storage	Store at 4°C short term. Aliquot and store at -20°C long term. Avoid freeze/thaw cycles.
Buffer	Liquid in PBS containing 50% glycerol, 0.5% BSA and 0.02% New type preservative N.
Purification	Affinity purification

Immunogen

Gene Name	GDF2 BMP9
Alternative Names	Growth/differentiation factor 2 (GDF-2;Bone morphogenetic protein 9;BMP-9)
Gene ID	2658.0
SwissProt ID	Q9UK05.Synthetic peptide from human protein at AA range: 371-420

Application

Dilution Ratio	IHC-p 1:50-200, ELISA 1:10000-20000.
Molecular Weight	

Background

This gene encodes a secreted ligand of the TGF-beta (transforming growth factor-beta) superfamily of proteins. Ligands of

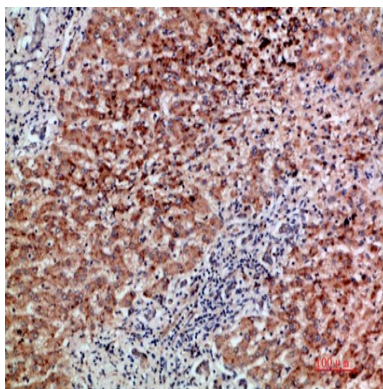
Product Name: BMP-9 Rabbit Polyclonal Antibody
Catalog #: APRab07606



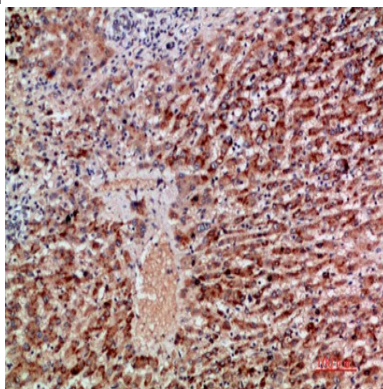
this family bind various TGF-beta receptors leading to recruitment and activation of SMAD family transcription factors that regulate gene expression. The encoded preproprotein is proteolytically processed to generate each subunit of the disulfide-linked homodimer. This protein regulates cartilage and bone development, angiogenesis and differentiation of cholinergic central nervous system neurons. Mutations in this gene are associated with hereditary hemorrhagic telangiectasia. [provided by RefSeq, Jul 2016],function:Could be involved in bone formation.,online information:GDF2 entry,similarity:Belongs to the TGF-beta family.,subunit:Homodimer; disulfide-linked.,

Research Area

Image Data

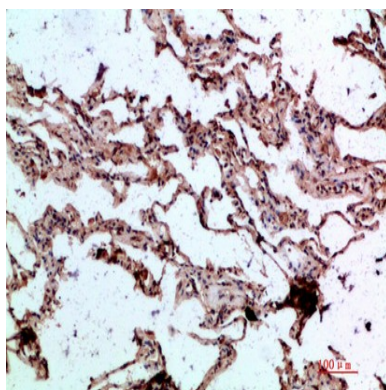


Immunohistochemical analysis of paraffin-embedded human-liver-cancer, antibody was diluted at 1:200

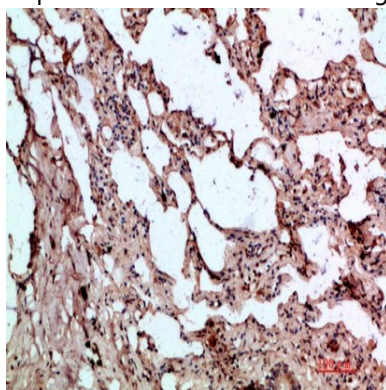


Immunohistochemical analysis of paraffin-embedded human-liver-cancer, antibody was diluted at 1:200

Product Name: BMP-9 Rabbit Polyclonal Antibody
Catalog #: APRab07606



Immunohistochemical analysis of paraffin-embedded human-lung, antibody was diluted at 1:200



Immunohistochemical analysis of paraffin-embedded human-lung, antibody was diluted at 1:200

Note

For research use only.