

**Product Name: Blr1 Rabbit Polyclonal Antibody**  
**Catalog #: APRab07581**



## Summary

<b>Production Name</b>	Blr1 Rabbit Polyclonal Antibody
<b>Description</b>	Rabbit Polyclonal Antibody
<b>Host</b>	Rabbit
<b>Application</b>	WB,ELISA
<b>Reactivity</b>	Human,Rat,Mouse

## Performance

<b>Conjugation</b>	Unconjugated
<b>Modification</b>	Unmodified
<b>Isotype</b>	IgG
<b>Clonality</b>	Polyclonal
<b>Form</b>	Liquid
<b>Storage</b>	Store at 4°C short term. Aliquot and store at -20°C long term. Avoid freeze/thaw cycles.
<b>Buffer</b>	Liquid in PBS containing 50% glycerol, 0.5% BSA and 0.02% New type preservative N.
<b>Purification</b>	Affinity purification

## Immunogen

<b>Gene Name</b>	CXCR5
<b>Alternative Names</b>	CXCR5; BLR1; MDR15; C-X-C chemokine receptor type 5; CXC-R5; CXCR-5; Burkitt lymphoma receptor 1; Monocyte-derived receptor 15; MDR-15; CD185
<b>Gene ID</b>	643.0
<b>SwissProt ID</b>	P32302.The antiserum was produced against synthesized peptide derived from the N-terminal region of human CXCR5. AA range:1-50

## Application

<b>Dilution Ratio</b>	WB 1:500 - 1:2000. ELISA: 1:10000
<b>Molecular Weight</b>	42kD

**Product Name: Blr1 Rabbit Polyclonal Antibody**  
**Catalog #: APRab07581**



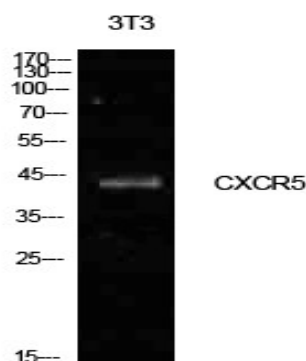
## Background

C-X-C motif chemokine receptor 5(CXCR5) Homo sapiens This gene encodes a multi-pass membrane protein that belongs to the CXC chemokine receptor family. It is expressed in mature B-cells and Burkitt's lymphoma. This cytokine receptor binds to B-lymphocyte chemoattractant (BLC), and is involved in B-cell migration into B-cell follicles of spleen and Peyer patches. Alternatively spliced transcript variants encoding different isoforms have been described for this gene. [provided by RefSeq, Aug 2011],function:Cytokine receptor that binds to B-lymphocyte chemoattractant (BLC). Involved in B-cell migration into B-cell follicles of spleen and Peyer patches but not into those of mesenteric or peripheral lymph nodes. May have a regulatory function in Burkitt lymphoma (BL) lymphomagenesis and/or B-cell differentiation.,online information:CXC chemokine receptors entry,similarity:Belongs to the G-protein coupled receptor 1 family.,tissue specificity:Expression in mature B-cells and Burkitt lymphoma cells.,

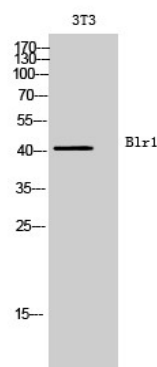
## Research Area

Cytokine-cytokine receptor interaction;Chemokine;

## Image Data



Western Blot analysis of NIH-3T3 cells using Blr1 Polyclonal Antibody.. Secondary antibody was diluted at 1:20000



Western Blot analysis of 3T3 cells using Blr1 Polyclonal Antibody. Secondary antibody was diluted at 1:20000

**Product Name: Blr1 Rabbit Polyclonal Antibody**  
**Catalog #: APRab07581**

---



**Note**

For research use only.